



# Spare Parts Catalog

16 S 181

Material number: 1316.055.126

ZF Friedrichshafen AG

Hauptverwaltung

80038 Friedrichshafen

Deutschland

Telefon: +49 7541 77-0

Telefax: +49 7541 77-908000

[www.zf.com](http://www.zf.com)

zuständiges Werk:

Friedrichshafen



| Pos. | Information                                   | Amendment number |
|------|---|------------------|
| 001  | Use case -----                                |                  |
| 002  | Customer IVECO MAGIRUS AG                     |                  |
| 003  | City Ulm                                      |                  |
| 004  | DUNS 31-561-9072                              |                  |
| 005  | Vehicle / Apparatus -----                     |                  |
| 006  | Sales Name SPR                                |                  |
| 007  | Manufacturer IVECO MAGIRUS AG                 |                  |
| 008  | Engineering Name                              |                  |
| 009  | Product Use TRUCK                             |                  |
| 010  | Vehicle/Hardware Type ROAD TRACTOR            |                  |
| 011  | SOP   |                  |
| 012  | Engine  |                  |
| 013  | Sales Designation                             |                  |
| 014  | Manufacturer FIAT GES.CO S.P.A                |                  |
| 015  | Eng.Displ.                                    |                  |
| 016  | Cylinder                                      |                  |
| 017  | Nom. power 375 kW                             |                  |
| 018  | RPM at nom. power 1900 1/min                  |                  |
| 019  | Nom. torque 2200 Nm                           |                  |
| 020  | RPM at nom. torque 1100 1/min                 |                  |
| 021  | Classification use case -----                 |                  |
| 024  | TOTAL NUMBER OF WHEELS 6                      |                  |
| 025  | NUMBER OF DRIVING WHEELS 4                    |                  |
| 026  | DYNAMIC TYRE RADIUS 446 mm                    |                  |
| 027  | REAR AXLE RATIO 2.93                          |                  |
| 028  | MAXIMUM SPEED 110 km/h                        |                  |
| 031  | PERMISS.GROSS VEHICLE WEIGHT 26 t             |                  |
| 032  | PERMISS.GROSS COMBIN.WEIGHT 60 t              |                  |
| 033  | Product description -----                     |                  |
| 034  | INSTALLATION POS TRANSMISSION HORIZONTAL LEFT |                  |
| 035  | TRANSMISSION ATTACHMENT FLANGE-MOUNTED        |                  |
| 036  | RATIO, BOTTOM GEAR 16.41                      |                  |



| Pos. | Information   | Amendment number |
|------|---|------------------|
| 037  | RATIO, TOP GEAR 1                                       |                  |
| 038  | RATIO, 1ST GEAR 16.41                                   |                  |
| 039  | RATIO, 2ND GEAR 13.8                                    |                  |
| 040  | RATIO, 3RD GEAR 11.28                                   |                  |
| 041  | RATIO, 4TH GEAR 9.49                                    |                  |
| 042  | RATIO, 5TH GEAR 7.76                                    |                  |
| 043  | RATIO, 6TH GEAR 6.53                                    |                  |
| 044  | RATIO, 7TH GEAR 5.43                                    |                  |
| 045  | RATIO, 8TH GEAR 4.57                                    |                  |
| 046  | RATIO, 9TH GEAR 3.59                                    |                  |
| 047  | RATIO, 10TH GEAR 3.02                                   |                  |
| 048  | RATIO, 11TH GEAR 2.47                                   |                  |
| 049  | RATIO, 12TH GEAR 2.08                                   |                  |
| 050  | RATIO, 13TH GEAR 1.7                                    |                  |
| 051  | RATIO, 14TH GEAR 1.43                                   |                  |
| 052  | RATIO, 15TH GEAR 1.19                                   |                  |
| 053  | RATIO, 16TH GEAR 1                                      |                  |
| 054  | RATIO, 1ST GEAR REVERSE 15.36                           |                  |
| 055  | RATIO, 2ND GEAR REVERSE 12.92                           |                  |
| 056  | SET OF RATIOS DG  |                  |
| 057  | UEBERSETZUNGSREIHE BASIS DG                             |                  |
| 058  | NUMBER OF PLANETARY GEARS 5                             |                  |
| 059  | UEBERSETZUNG PLANETENSATZ 4.565                         |                  |
| 060  | AUSF VERZAHNUNG PLANETENSATZ OBLIQUE TOOTHING           |                  |
| 061  | DESIGN, SHIFT SYSTEM TURNING SHAFT                      |                  |
| 062  | POSITION, GEAR SHIFT SYSTEM HORIZONTAL LEFT             |                  |
| 063  | DESIGN, SHIFT PATTERN H-H                               |                  |
| 064  | VERSION SHIFT SUPPORT SERVO                             |                  |
| 065  | VERSION ACTUATION SHIFT SYSTEM MECHANICAL               |                  |
| 066  | VERSION TUBE R/C PLASTIC-FORM-PIPE                      |                  |
| 068  | VERSION TUBE SERVO PLASTIC PIPING                       |                  |
| 069  | HINWEIS ZU AUSF SCHALTUNG ADDITIONAL AIR SHUT-OFF VALVE |                  |



| Pos. | Information  | Amendment number |
|------|--|------------------|
| 078  | DESIGN, THROTTLE, CUT-OFF VALVE D=1.55                 |                  |
| 079  | AUSF LUFTANSCHL ABSCHALTVENTIL F                       |                  |
| 080  | MONTAGEHINWEIS ABSCHALTVENTIL CUT-OFF VALVE            |                  |
| 083  | SELECTION PATTERN VARIANT GEAR SHIFT PATTERN 1         |                  |
| 086  | DESIGN, SEPARATING CLUTCH FULL-SYNCHRONIZED            |                  |
| 087  | VERSION OF SYNCHRONIZER 1 1.-4.GEAR BK-SYNCHRONIZATION |                  |
| 089  | REFERENCE LENGTH INPUT SHAFT 117 mm                    |                  |
| 090  | STANDARD TYPE INPUT SHAFT SAE                          |                  |
| 091  | NUMBER OF WEDGES INPUT SHAFT 10                        |                  |
| 092  | VERSION OF INPUT SHAFT FORM C                          |                  |
| 093  | NOMINAL DIAMETER INPUT SHAFT 2 in                      |                  |
| 094  | DIAMETER, JOURNAL, INPUT SHAFT 25 mm                   |                  |
| 095  | TYPE FIT SPIGOTS INPUT SHAFT F7                        |                  |
| 096  | VER. BEAR. SPIGOTS INPUT SHAFT TAPER ROLLER            |                  |
| 097  | LENGTH, INPUT SHAFT 403.5 mm                           |                  |
| 098  | DIAMETER SHAFT OF INPUT SHAFT 50.3 mm                  |                  |
| 099  | LENGTH, PROFILE, INPUT SHAFT 120 mm                    |                  |
| 100  | BUSH VARIANT INPUT SHAFT WITHOUT GROOVE                |                  |
| 101  | VERSION BEARING CONSTANT 1 GL                          |                  |
| 102  | DIAMETER BEARING INPUT SHAFT 99.916 mm                 |                  |
| 103  | TYPE FIT BEAR. INPUT SHAFT H5                          |                  |
| 104  | DESIGN, CONN., CLUTCH HOUSING SAE 1                    |                  |
| 108  | VERSION OF CLUTCH HOUSING INTEGRATED                   |                  |
| 109  | DESIGN BEARING OUTPUT STANDARD SUSPENSION              |                  |
| 111  | POSITION MOUNT. FACE HOUSING 2 WITHOUT GROOVE          |                  |
| 115  | REF.LENGTH, RELEASE BEAR.FLAN -3 mm                    |                  |
| 116  | DIAMETER, RELEASE FLANGE 62.611 mm                     |                  |
| 120  | ASSEMBLY POS. CLUTCH CYLINDER 6                        |                  |
| 121  | OUTER DIA. OUTPUT FLANGE RA 180 mm                     |                  |
| 122  | NO.OF BORES OUTPUT FLANGE HA1 4                        |                  |
| 124  | BORE DIA. OUTPUT FLANGE RA 15 mm                       |                  |
| 129  | REF. LENGTH OUTPUT FLANGE RA 211.5 mm                  |                  |



| Pos. | Information  | Amendment number |
|------|--|------------------|
| 136  | DIMENSION SHIFT TURRET DIST. 300 mm                |                  |
| 137  | MEAS. LOC. SHIFT TURRET DIST. SHIFT LEVER-LOCATION |                  |
| 146  | SHIFT LEVER CONNECTION KNURLING                    |                  |
| 152  | SPRING ARRANGEMENT Q1                              |                  |
| 153  | SPRING FORCE DETENT PLUNGER RG 90 N                |                  |
| 154  | HUMP SPRING FORCE, OUTSIDE 120 N                   |                  |
| 158  | SELECTOR SPRING FORCE, OUTSIDE 50 N                |                  |
| 161  | SPRING FORCE OUTS. DETENT NEUT 200 N               |                  |
| 163  | ALLOCATION DETENT LEVER VER. A                     |                  |
| 169  | SWITCH, REVERSE GEAR y                             |                  |
| 170  | DESIGN, RG (REV.GEAR) SWITCH CLOSING               |                  |
| 171  | DESIGN, CONNECTION, RG SWITCH DIN BAYONET          |                  |
| 172  | CODE SWITCH RG A1                                  |                  |
| 173  | PROT. CAP SWITCH, REVERSE GEAR y                   |                  |
| 175  | NOTE ON SWITCH, REVERSE GEAR G.SHIFT SHAFT         |                  |
| 176  | SWITCH, NEUTRAL GEAR y                             |                  |
| 177  | DESIGN,NG(NEUTRAL GEAR)SWITCH OPENING SWITCH       |                  |
| 178  | DESIGN, CONNECTION, NG SWITCH DIN BAYONET          |                  |
| 179  | CODE SWITCH NG A1                                  |                  |
| 180  | PROT.CAP SWITCH, NEUTRAL GEAR y                    |                  |
| 197  | FUNCTION OF R/C SWITCH GP                          |                  |
| 198  | DESIGN, GP SWITCH CLOSING                          |                  |
| 199  | DESIGN, CONNECTION, GP SWITCH DIN BAYONET          |                  |
| 201  | PROTECTING CAP GP SWITCH y                         |                  |
| 203  | FUNCTION OF S/G SWITCH GV                          |                  |
| 204  | DESIGN, GV SWITCH PREPARED                         |                  |
| 207  | PROTECTING CAP GV SWITCH n                         |                  |
| 249  | ATTACHM.POS.HEAT EXCHANGER IN FRONT LEFT PREPARED  |                  |
| 251  | VER. TRANSMISSION VENTILATION BREATHER             |                  |
| 262  | VERSION PULSE SENSOR SFA H68 WITHOUT GROOVE        |                  |
| 266  | PROT. CAP PULSE SENSOR SFA H68 n                   |                  |
| 267  | NO. PULSES PULSE SENSOR SFAH68 6 IMP/U             |                  |



| Pos. | Information   | Amendment number |
|------|---|------------------|
| 272  | VER. PULSE SENSOR TRANSM. H70 WITHOUT GROOVE        |                  |
| 276  | PROT. CAP PULSE SENSOR TM H70 n                     |                  |
| 277  | NO PULSES PULSE SENSOR TM H70 6 IMP/U               |                  |
| 278  | ASSEMBLY POS PULSE SENSOR H70 1                     |                  |
| 279  | NOTE ASS. POS PULSE SENSOR H70 INSTALLATION DRAWING |                  |
| 294  | POSITION, OIL FILLER HOUSING LEFT+RIGHT             |                  |
| 295  | NOTE ON OIL FILL FILL IN OVERFLOW                   |                  |
| 296  | OIL CAPACITY, GEARBOX 13 dm3                        |                  |
| 297  | OIL FILL VARIANT EX WORKS                           |                  |
| 298  | OIL GRADE PERMISSIBLE ACC. TO TE-ML02               |                  |
| 299  | OIL CLASS FIRST FILLING E                           |                  |
| 300  | CODING OUTER CONSERVATION KA1                       |                  |
| 301  | SCOPE OUTER CONSERVATION T                          |                  |
| 302  | CODING INNER CONSERVATION KI2                       |                  |
| 303  | CONSERVATION SPECIFICATION ZFN 916                  |                  |
| 305  | COLOR BLACK-GREY                                    |                  |
| 306  | COLOUR CLASSIFICATION ACC. TO RAL 7021              |                  |
| 308  | INFO TO PAINTING INSTRUCTIONS                       |                  |
| 309  | Documents -----                                     |                  |
| 310  | Drawing 1315.051.100                                |                  |
| 311  | Drawing 1316.101.035                                |                  |
| 312  | Drawing 1316.655.001                                |                  |
| 313  | 1315.051.200 Drawing 1315.051.200                   |                  |
| 314  | Alias ID -----                                      |                  |
| 315  | IVECO MAGIRUS AG 8851646                            |                  |

# Assembly group overview

Material number: 1316.055.126

16 S 181 /

Page 1 from 2



| Graphics    | Pos. | Material number | Name               | Quantity | Amend. no. | Techn. Info. |
|-------------|------|-----------------|--------------------|----------|------------|--------------|
| 068.01.05-1 | 110  | 1316.101.103    | GEARBOX HOUSING    | 1        |            |              |
| 068.01.58-1 | 120  | 1316.101.957    | GEARBOX HOUSING    | 1        |            |              |
| 068.02.57-1 | 140  | 1315.102.415    | CONNPLATE          | 1        |            |              |
| 068.02.82-1 | 150  | 1315.102.811    | INPUT SHAFT        | 1        |            |              |
| 068.02.02-1 | 910  | 1316.102.036    | INPUT SHAFT        | 1        |            |              |
| 068.03.80-1 | 180  | 1316.103.803    | LAYSHAFT           | 1        |            |              |
| 068.03.01-1 | 920  | 1316.103.012    | LAYSHAFT           | 1        |            |              |
| 068.04.13-1 | 930  | 1316.104.037    | MAIN SHAFT         | 1        |            |              |
| 068.06.01-1 | 230  | 1316.106.008    | GEAR SHIFT SYSTEM  | 1        |            |              |
| 068.06.43-1 | 234  | 1315.106.422    | CONNECTING PARTS   | 1        |            |              |
| 068.06.80-1 | 238  | 1315.106.800    | GEAR SHIFT SYSTEM  | 1        |            |              |
| 068.07.81-1 | 292  | 1316.108.817    | GEAR SHIFT HOUSING | 1        |            |              |
| 068.07.36-1 | 910  | 1316.108.047    | GEAR SHIFT HOUSING | 1        |            |              |
| 068.07.25-1 | 914  | 1316.108.459    | GEAR SHIFT SHAFT   | 1        |            |              |
| 068.07.55-1 | 924  | 1316.108.026    | DETENT             | 1        |            |              |
| 068.07.57-1 | 930  | 1316.108.811    | COVER              | 1        |            |              |
| 062.08.30-1 | 954  | 1316.171.403    | END COVER          | 1        |            |              |
| 068.08.40-1 | 960  | 1316.171.408    | PNEUMSERVUNIT      | 1        |            |              |
| 068.08.82-1 | 964  | 1316.171.809    | CONNECTING PARTS   | 1        |            |              |
| 068.09.01-1 | 934  | 1316.109.022    | CONNECTING PARTS   | 1        |            |              |
| 068.09.11-1 | 940  | 1316.109.419    | CONNECTING PARTS   | 1        |            |              |
| 068.12.08-1 | 918  | 1316.149.422    | SET OF SPRINGS     | 1        |            |              |
| 068.40.04-1 | 500  | 1316.112.012    | GV-SHIFT SYSTEM    | 1        |            |              |
| 068.40.40-1 | 502  | 1315.112.402    | CONNECTING PARTS   | 1        |            |              |
| 068.43.21-1 | 10   | 1315.131.047    | COVER              | 1        |            |              |
| 068.43.06-1 | 20   | 1315.131.050    | GP HOUSING         | 1        |            |              |
| 068.43.45-1 | 24   | 1315.131.401    | CONNECTING PARTS   | 1        |            |              |
| 068.43.40-1 | 30   | 1315.131.400    | CLOSING COMPONENTS | 1        |            |              |
| 068.43.80-1 | 512  | 1315.131.805    | GP HOUSING         | 1        |            |              |
| 068.44.07-1 | 40   | 1315.132.015    | PLANETARY DRIVE    | 1        |            |              |
| 068.44.41-1 | 50   | 1316.132.400    | PLANETARY DRIVE    | 1        |            |              |

# Assembly group overview

Material number: 1316.055.126

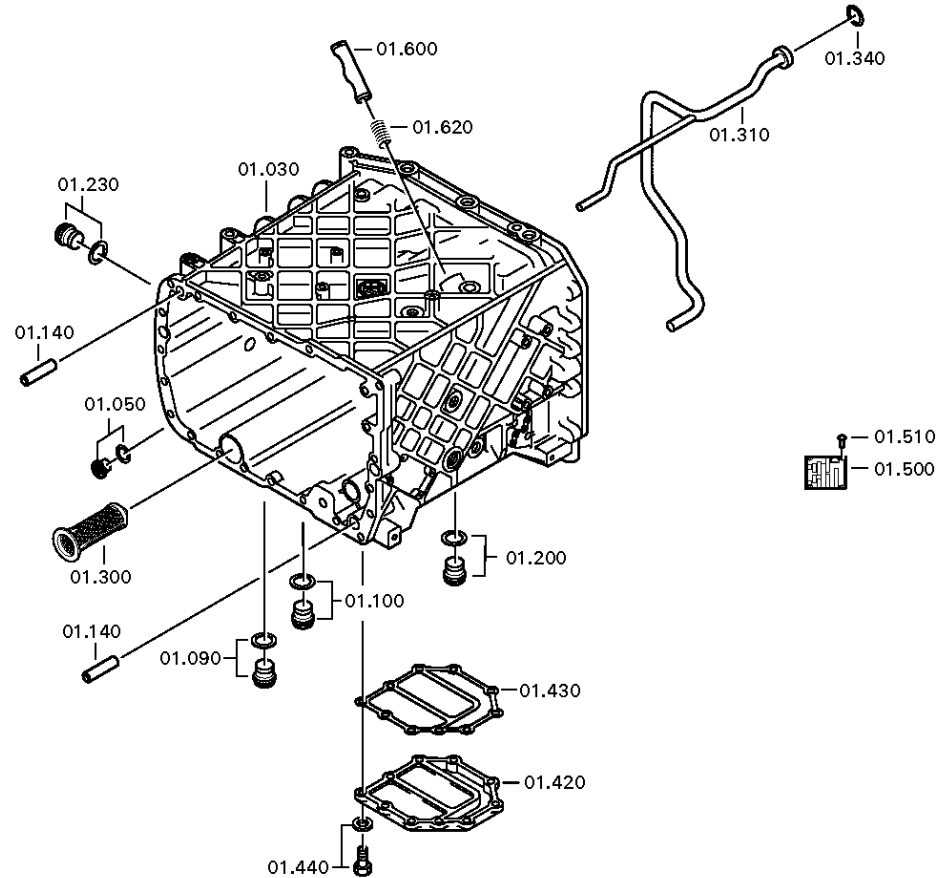
16 S 181 /

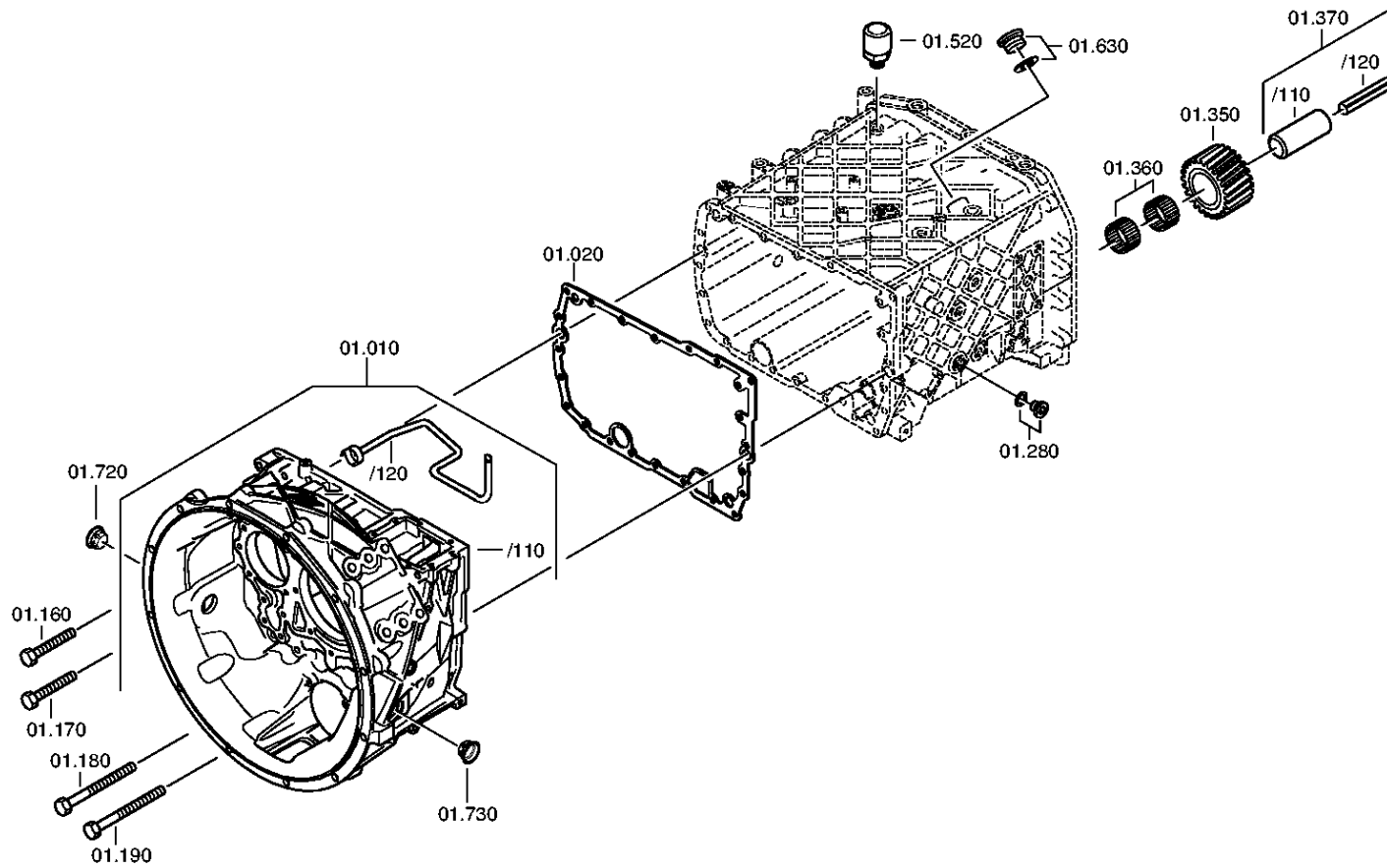
Page 2 from 2



| Graphics    | Pos. | Material number | Name             | Quantity | Amend. no. | Techn. Info. |
|-------------|------|-----------------|------------------|----------|------------|--------------|
| 068.45.04-1 | 70   | 1316.133.008    | SYNCHRONIZER     | 1        |            |              |
| 068.45.40-1 | 80   | 1315.133.405    | SYNCHRONIZER     | 1        |            |              |
| 068.46.02-1 | 90   | 1316.134.021    | GP SHIFT SYSTEM  | 1        |            |              |
| 068.46.40-1 | 554  | 1315.134.413    | CONNECTING PARTS | 1        |            |              |
| 068.57.04-1 | 390  | 1316.145.002    | RANGE SELECTION  | 1        |            |              |







# Parts list

Page 1 from 3

Material number: 1316.055.126

16 S 181 /

Plant: 068.01.05-1

Material-assembly-group-no: 1316.101.103



| Pos. | Material number | Customer material | Name            | Quantity | ME | Amend. no.   | Techn. Info.                  | Weight | Rep kit | Alternative material |
|------|-----------------|-------------------|-----------------|----------|----|--------------|-------------------------------|--------|---------|----------------------|
| 10   | 1316.201.142    |                   | CLUTCH HOUSING  | 1        |    |              | KPL.                          | 0,000  |         |                      |
| /110 | 1316.301.064    |                   | CLUTCH HOUSING  | 1        |    |              | ENTHALT.IN 1316 301<br>060(0) | 0,000  |         |                      |
| /120 | 1315.201.097    |                   | PIPE            | 1        |    |              | KPL.                          | 0,000  |         |                      |
| 20   | 1315.301.233    | 5 5367 0          | GASKET          | 1        |    | C01005348C10 |                               | 0,000  |         |                      |
| 30   | 1316.201.110    |                   | HOUSING         | 1        |    | C01002290A10 | KPL.DG IN 1316 201<br>108(0)  | 0,000  |         |                      |
| 50   | ---             |                   | SCREW PLUG      | 1        |    | Z00010176111 | M24X1,5                       | 0,000  |         |                      |
| ---  | 0736.300.160    | 4471982.1         | SCREW PLUG      | 1        |    | Z00010176110 | M24X1,5 M24X1,5               | 0,000  |         |                      |
| ---  | 0730.008.637    |                   | SEALING RING    | 1        |    | Z00010176110 | A24X29                        | 0,000  |         |                      |
| 90   | ---             |                   | SCREW PLUG      | 1        |    | Z00010164013 | 50N.M*DICHTRING<br>M22X1,5    | 0,000  |         |                      |
| ---  | 0636.100.824    |                   | SCREW PLUG      | 1        |    | Z00010164019 | M22X1,5                       | 0,000  |         |                      |
| ---  | 0730.009.515    |                   | SEALING RING    | 1        |    | Z00010164019 | A22X27                        | 0,000  |         |                      |
| 100  | ---             |                   | SCREW PLUG      | 1        |    | Z00010164013 | 50N.M*DICHTRING<br>M22X1,5    | 0,000  |         |                      |
| ---  | 0636.100.824    |                   | SCREW PLUG      | 1        |    | Z00010164019 | M22X1,5                       | 0,000  |         |                      |
| ---  | 0730.009.515    |                   | SEALING RING    | 1        |    | Z00010164019 | A22X27                        | 0,000  |         |                      |
| 140  | 0731.201.563    |                   | CYLINDRICAL PIN | 4        |    |              |                               | 0,000  |         |                      |
| 160  | 0736.300.123    | 1880233           | HEXAGON BOLT    | 14       |    |              | M10X70 M10X70                 | 0,000  |         |                      |
| 170  | ---             |                   | HEXAGON BOLT    | 1        |    |              | M10X70                        | 0,000  |         |                      |
| ---  | 0736.300.123    | 1880233           | HEXAGON BOLT    | 1        |    |              | M10X70 M10X70                 | 0,000  |         |                      |
| ---  | 0666.790.033    |                   | SEALCOMPOUND    | 1        |    |              |                               | 0,310  |         |                      |
| 180  | 0736.300.119    |                   | HEXAGON BOLT    | 6        |    | Z00009403410 | M10X140 M10X140               | 0,000  |         |                      |
| 190  | ---             |                   | HEXAGON BOLT    | 1        |    | Z00009403410 | M10X140                       | 0,000  |         |                      |
| ---  | 0736.300.119    |                   | HEXAGON BOLT    | 1        |    | Z00009403412 | M10X140 M10X140               | 0,000  |         |                      |
| ---  | 0666.790.033    |                   | SEALCOMPOUND    | 1        |    | Z00009403412 |                               | 0,310  |         |                      |
| 200  | ---             |                   | SCREW PLUG      | 1        |    | Z00010112111 | 60N.M*DICHTRING<br>M24X1,5    | 0,000  |         |                      |
| ---  | 0636.304.088    |                   | SCREW PLUG      | 1        |    | Z00010112110 | M24X1,5                       | 0,000  |         |                      |
| ---  | 0730.008.637    |                   | SEALING RING    | 1        |    | Z00010112110 | A24X29                        | 0,000  |         |                      |

# Parts list

Page 2 from 3

Material number: 1316.055.126

16 S 181 /

Plant: 068.01.05-1

Material-assembly-group-no: 1316.101.103



| Pos. | Material number | Customer material | Name                | Quantity | ME | Amend. no.   | Techn. Info.                  | Weight | Rep kit | Alternative material |
|------|-----------------|-------------------|---------------------|----------|----|--------------|-------------------------------|--------|---------|----------------------|
| 230  | ---             |                   | SCREW PLUG          | 1        |    | Z00010112111 | 60N.M*DICHTRING<br>M24X1,5    | 0,000  |         |                      |
| ---  | 0636.304.088    |                   | SCREW PLUG          | 1        |    | Z00010112110 | M24X1,5                       | 0,000  |         |                      |
| ---  | 0730.008.637    |                   | SEALING RING        | 1        |    | Z00010112110 | A24X29                        | 0,000  |         |                      |
| 280  | ---             |                   | SCREW PLUG          | 1        |    | Z00010112111 | 60N.M*DICHTRING<br>M24X1,5    | 0,000  |         |                      |
| ---  | 0636.304.088    |                   | SCREW PLUG          | 1        |    | Z00010112110 | M24X1,5                       | 0,000  |         |                      |
| ---  | 0730.008.637    |                   | SEALING RING        | 1        |    | Z00010112110 | A24X29                        | 0,000  |         |                      |
| 300  | 0501.318.802    | 5718 742 08       | SCREEN INSERT       | 1        |    | C01000947C10 |                               | 0,000  |         |                      |
| 310  | 1316.201.056    |                   | SPRAY TUBE          | 1        |    |              | KPL. IN 1315 201 112(0)       | 0,000  |         |                      |
| 340  | 0634.313.198    | 1000004936        | O-RING              | 1        |    |              | 20X3                          | 1      |         |                      |
| 350  | ---             |                   | REVERSE IDLER GEAR  | 1        |    | C01006413F10 |                               | 0,000  |         |                      |
| ---  | 1316.305.001    |                   | REVERSE IDLER GEAR  | 1        |    |              | Z22 IN 1295 305 050(1)        | 0,000  |         |                      |
| ---  | 1316.305.008    | 1882761           | REVERSE IDLER GEAR  | 1        |    |              | Z22 IN 1295 305 050(1)        | 0,000  |         |                      |
| 360  | 0750.115.369    | 820-400-2290      | NEEDLE CAGE         | 2        |    |              | 45,0X57,0X25,0                | 0,000  |         |                      |
| 370  | 1316.201.029    |                   | REVERSE IDLER SHAFT | 1        |    |              | KPL.16S221*DG*L=107           | 0,000  |         |                      |
| /120 | 0631.329.296    |                   | SLOTPIN             | 1        |    |              | 10X123                        | 0,000  |         |                      |
| 420  | 1315.301.151    |                   | COVER               | 1        |    |              |                               | 0,000  |         |                      |
| 430  | 0501.316.146    | 133-198-1940      | GASKET              | 1        |    | C01002166A10 |                               | 0,000  |         |                      |
| 440  | 0636.100.432    |                   | HEXAGON BOLT        | 10       |    | Z00007349511 | M10X28                        | 0,000  |         |                      |
| 500  | ---             |                   | TYPE PLATE          | 1        |    |              | KONZERN                       | 0,000  |         |                      |
| ---  | 0730.365.241    |                   | TYPE PLATE          | 1        |    |              | EINHEITSSCH.<br>VERDREHSICHER | 0,000  |         |                      |
| ---  | 0730.365.259    |                   | TYPE PLATE          | 1        |    |              | EINHEITSSCH.<br>VERDREHSICHER | 0,000  |         |                      |
| ---  | 0730.365.267    |                   | TYPE PLATE          | 1        |    |              | CHINA                         | 0,000  |         |                      |
| ---  | 0730.300.258    |                   | TYPE PLATE          | 1        |    |              | EINHEITSSCH.<br>VERDREHSICHER | 0,000  |         |                      |
| ---  | 0730.365.271    |                   | TYPE PLATE          | 1        |    |              | RUSSLAND/<br>KYRILLISCH       | 0,000  |         |                      |
| ---  | 0730.365.257    |                   | TYPE PLATE          | 1        |    |              | S.S.CH IRAN                   | 0,000  |         |                      |

# Parts list

Page 3 from 3

Material number: 1316.055.126

16 S 181 /

Plant: 068.01.05-1

Material-assembly-group-no: 1316.101.103



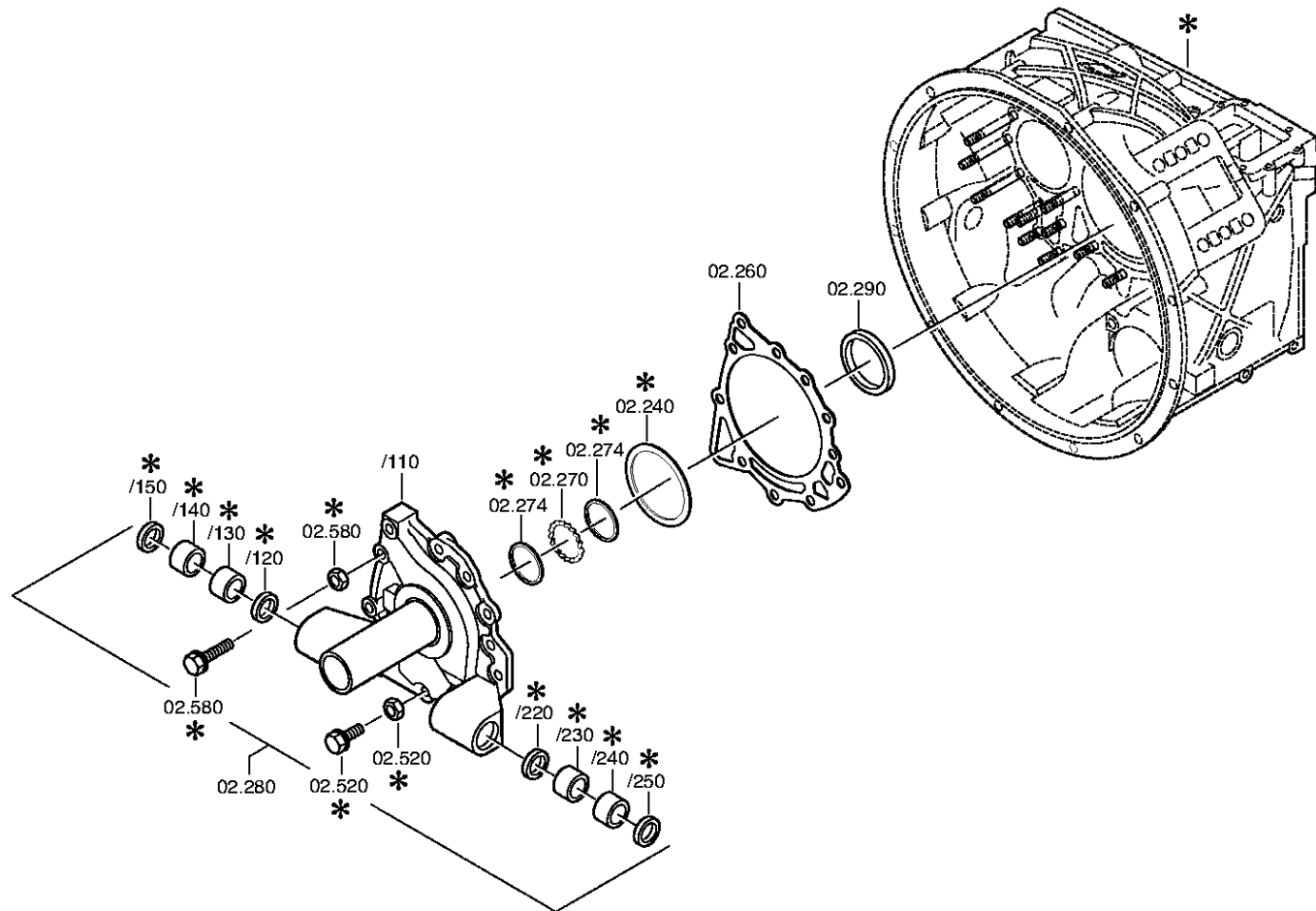
| Pos. | Material number | Customer material | Name         | Quantity | ME | Amend. no.   | Techn. Info.               | Weight | Rep kit | Alternative material |
|------|-----------------|-------------------|--------------|----------|----|--------------|----------------------------|--------|---------|----------------------|
| 510  | 0731.300.027    |                   | BLIND RIVET  | 4        |    | Z00007904810 |                            | 0,000  |         |                      |
| 520  | ---             |                   | BREATHER     | 1        |    |              | M10X1KEG                   | 0,000  |         |                      |
| ---  | 0501.218.540    |                   | BREATHER     | 1        |    |              |                            | 0,000  |         |                      |
| 600  | 1313.306.013    |                   | LOCKING PIN  | 1        |    |              |                            | 0,000  |         |                      |
| 620  | 0732.040.736    | 2150041300        | COMPRSPRING  | 1        |    |              |                            | 5,200  |         |                      |
| 630  | ---             |                   | SCREW PLUG   | 1        |    | Z00010164412 | 70N.M*DICHTRING<br>M26X1,5 | 0,000  |         |                      |
| ---  | 0636.100.811    |                   | SCREW PLUG   | 1        |    | Z00010164420 | M26X1,5                    | 0,000  |         |                      |
| ---  | 0634.801.249    |                   | SEALING RING | 1        |    | Z00010164420 | 26X31                      | 0,010  |         |                      |
| 720  | 0501.321.840    |                   | PLUG         | 1        |    |              |                            | 0,000  |         |                      |
| 730  | 0501.321.840    |                   | PLUG         | 1        |    |              |                            | 0,000  |         |                      |

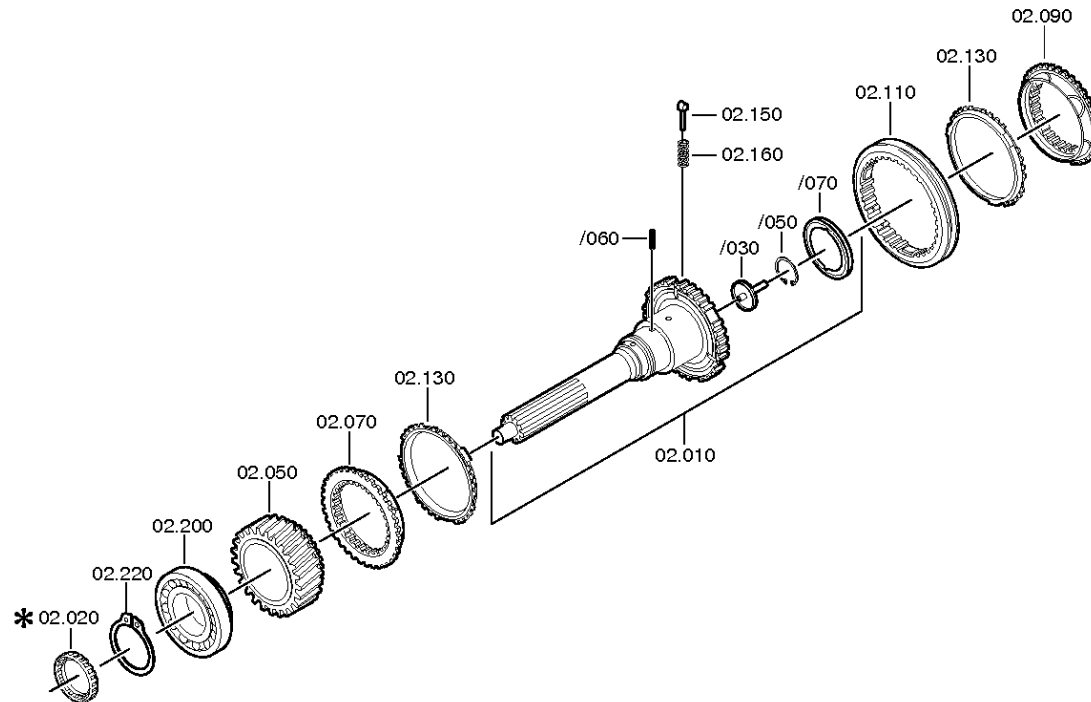
# Plant

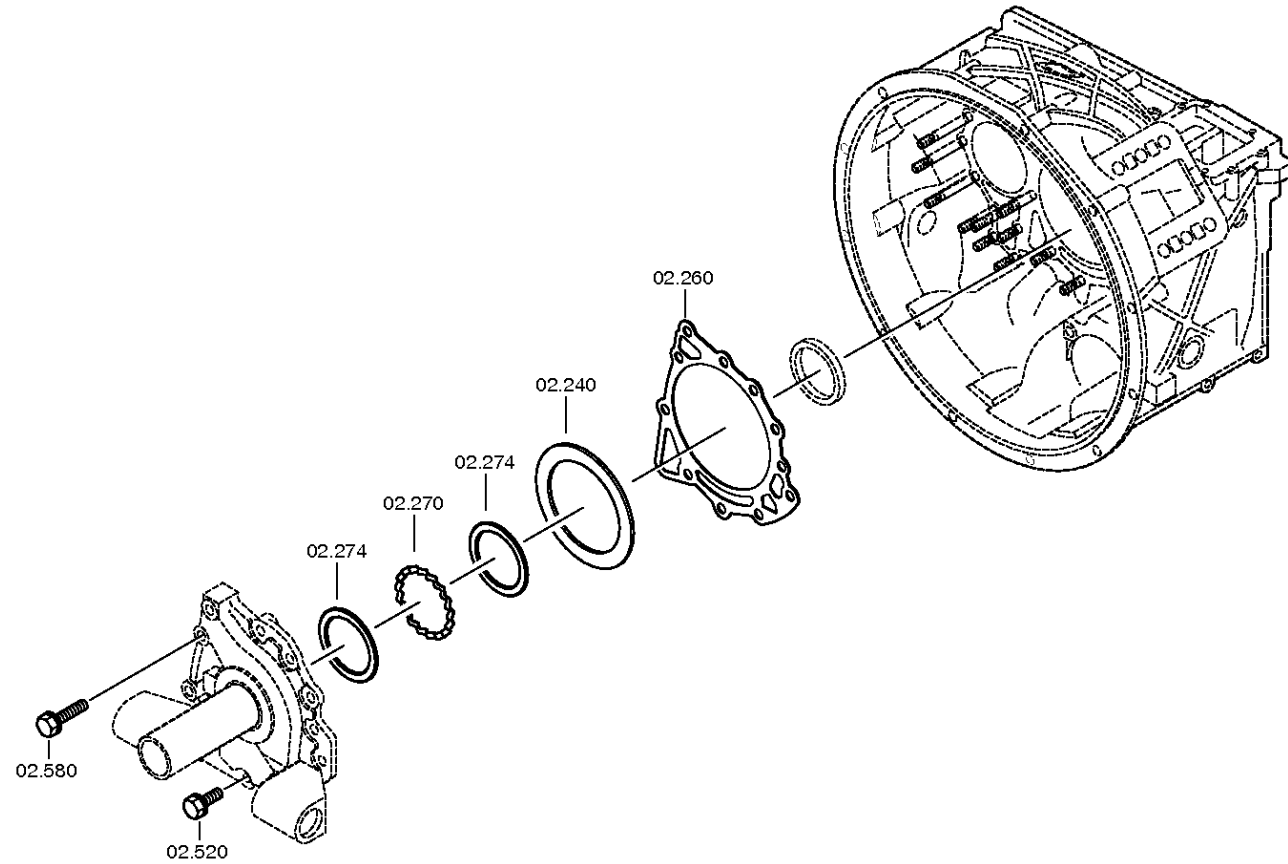
Page 1 from 3

Material number: 1316.055.126  
Plant: 068.02.57-1  
INPUT SHAFT

16 S 181 /  
CONNPLATE









# Parts list

Page 1 from 3

Material number: 1316.055.126

16 S 181 /

Plant: 068.02.57-1

Material-assembly-group-no: 1315.102.415



| Pos. | Material number | Customer material | Name           | Quantity | ME | Amend. no.   | Techn. Info.                              | Weight | Rep kit | Alternative material |
|------|-----------------|-------------------|----------------|----------|----|--------------|---|--------|---------|----------------------|
| 10   | 1316.202.026    |                   | INPUT SHAFT    | 1        |    |              | KPL.L117*GL100*ZAPF.25                    | 0,000  |         |                      |
| /30  | 1354.302.019    |                   | PIPE           | 1        |    | Z00003830511 |   | 0,000  |         |                      |
| /50  | 0630.502.027    |                   | RETAINING RING | 1        |    |              | 50X2                                      | 8      |         |                      |
| /70  | 0750.101.179    |                   | OIL DAM        | 1        |    | Z00007187910 | 88,0X95,5X6,0                             | 0,000  |         |                      |
| 50   | 1316.302.066    |                   | HELICAL GEAR   | 1        |    |              | ENTHALT.IN 1316 302 026(1)                | 0,000  |         |                      |
| 70   | 1312.304.027    | 133-461-3080      | CLUTCH BODY    | 1        |    |              | ENTHALT.IN 1310 304 107(1)                | 0,000  |         |                      |
| 90   | 1312.304.027    | 133-461-3080      | CLUTCH BODY    | 1        |    | C01004681D10 | ENTHALT.IN 1310 304 107(1)                | 0,000  |         |                      |
| 110  | 1310.304.202    | 133-421-3670      | SLIDING SLEEVE | 1        |    | C01005378A10 |   | 0,000  |         |                      |
| 130  | 1297.304.484    | 5 5304 0          | SYNCHRORING    | 2        |    |              |   | 0,000  |         |                      |
| 150  | 1297.304.436    |                   | PRESSURE PIECE | 3        |    |              |   | 0,004  |         |                      |
| 160  | 0732.040.409    |                   | COMPRSPRING    | 3        |    | C01007317F10 |   | 0,002  |         |                      |
| 200  | 0750.117.732    | 820-400-2350      | TAROLLBEARING  | 1        |    |              | 85,0X150,0X30,5                           | 0,000  |         |                      |
| 220  | 0730.501.598    |                   | RETAINING RING | 1        |    | C01007992110 | 85X4                                      | 0,000  |         |                      |
| 240  | ---             |                   | SHIM           | 1        |    |              | H= 0,90- 2,40( ABSTUFUNG:0,05MM)          | 0,000  |         |                      |
| ---  | 2050.309.094    |                   | SHIM           | 1        |    |              | A=2,2 IN 2050 309 090 C45E WW.F500 ZFN410 | 0,000  |         |                      |
| ---  | 0730.007.489    |                   | SHIM           | 1        |    |              | A=2,15 IN 2050 309 090(2)                 | 0,000  |         |                      |
| ---  | 0730.007.488    |                   | SHIM           | 1        |    |              | A=2,10 IN 2050 309 090(2)                 | 0,000  |         |                      |
| ---  | 0730.007.487    |                   | SHIM           | 1        |    |              | A=2,05 IN 2050 309 090(2)                 | 0,000  |         |                      |
| ---  | 0730.007.486    |                   | SHIM           | 1        |    |              | A=2,00 IN 2050 309 090(2)                 | 0,000  |         |                      |
| ---  | 0730.007.485    |                   | SHIM           | 1        |    |              | A=1,95 IN 2050 309 090(2)                 | 0,000  |         |                      |

# Parts list

Page 2 from 3

Material number: 1316.055.126

16 S 181 /

Plant: 068.02.57-1

Material-assembly-group-no: 1315.102.415



| Pos. | Material number | Customer material | Name | Quantity | ME | Amend. no. | Techn. Info.                              | Weight | Rep kit | Alternative material |
|------|-----------------|-------------------|------|----------|----|------------|---|--------|---------|----------------------|
| ---  | 0730.007.484    |                   | SHIM | 1        |    |            | A=1,90 IN 2050 309 090(2)                 | 0,000  |         |                      |
| ---  | 0730.007.483    |                   | SHIM | 1        |    |            | A=1,85 IN 2050 309 090(2)                 | 0,000  |         |                      |
| ---  | 0730.007.482    |                   | SHIM | 1        |    |            | A=1,80 IN 2050 309 090(2)                 | 0,000  |         |                      |
| ---  | 0730.007.481    |                   | SHIM | 1        |    |            | A=1,75 IN 2050 309 090(2)                 | 0,000  |         |                      |
| ---  | 0730.007.480    | 1833896           | SHIM | 1        |    |            | A=1,70 IN 2050 309 090(2)                 | 0,000  |         |                      |
| ---  | 0730.007.479    |                   | SHIM | 1        |    |            | A=1,65 IN 2050 309 090(2)                 | 0,000  |         |                      |
| ---  | 0730.007.136    |                   | SHIM | 1        |    |            | A=1,60 IN 2050 309 090(2)                 | 0,000  |         |                      |
| ---  | 0730.007.135    |                   | SHIM | 1        |    |            | A=1,55 IN 2050 309 090(2)                 | 0,000  |         |                      |
| ---  | 0730.007.134    |                   | SHIM | 1        |    |            | A=1,50 IN 2050 309 090(2)                 | 0,000  |         |                      |
| ---  | 0730.007.133    |                   | SHIM | 1        |    |            | A=1,45 IN 2050 309 090(2)                 | 0,000  |         |                      |
| ---  | 0730.007.132    |                   | SHIM | 1        |    |            | A=1,40 IN 2050 309 090(2)                 | 0,000  |         |                      |
| ---  | 0730.007.131    |                   | SHIM | 1        |    |            | A=1,35 IN 2050 309 090(2)                 | 0,000  |         |                      |
| ---  | 0730.007.130    |                   | SHIM | 1        |    |            | A=1,30 IN 2050 309 090(2)                 | 0,000  |         |                      |
| ---  | 0730.007.129    |                   | SHIM | 1        |    |            | A=1,25 IN 2050 309 090(2)                 | 0,000  |         |                      |
| ---  | 2050.309.034    |                   | SHIM | 1        |    |            | A=1,2 IN 2050 309 090 C45E WW.F500 ZFN410 | 0,000  |         |                      |
| ---  | 0730.007.128    |                   | SHIM | 1        |    |            | A=1,15 IN 2050 309 090(2)                 | 0,000  |         |                      |

# Parts list

Page 3 from 3

Material number: 1316.055.126

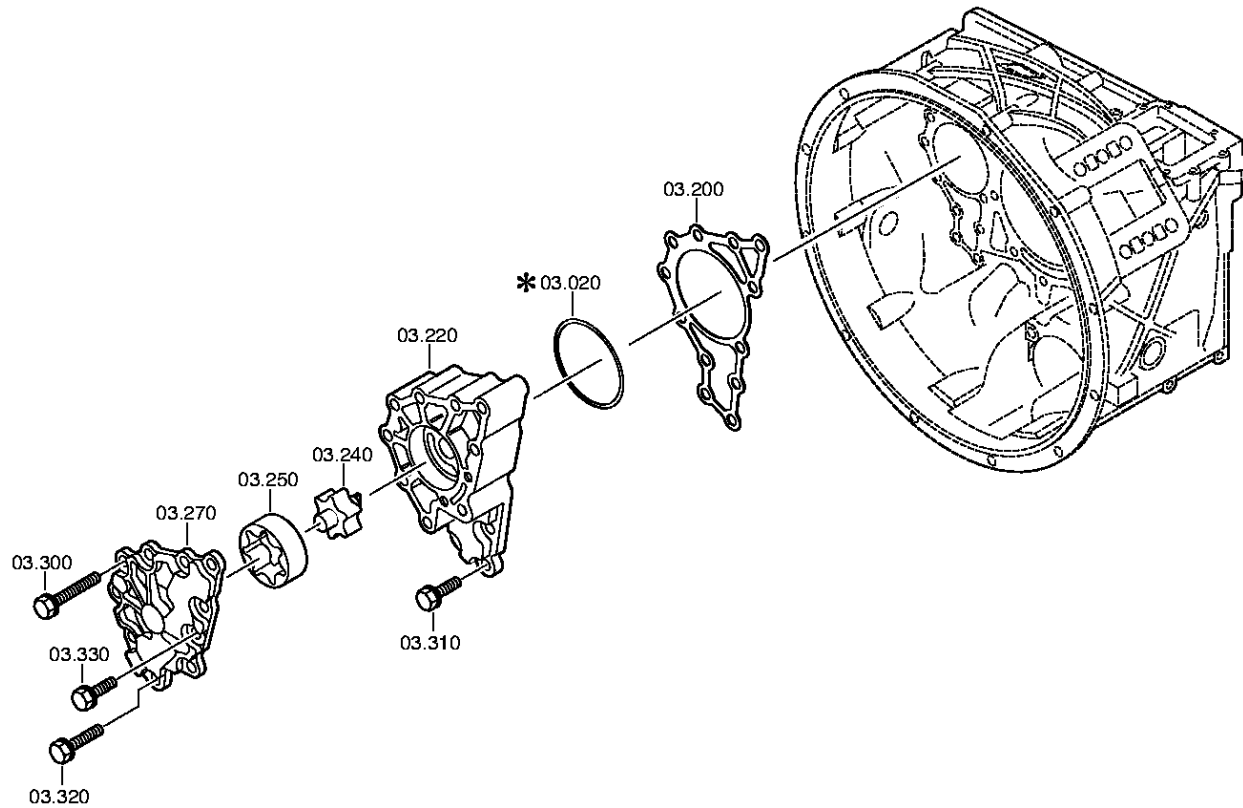
16 S 181 /

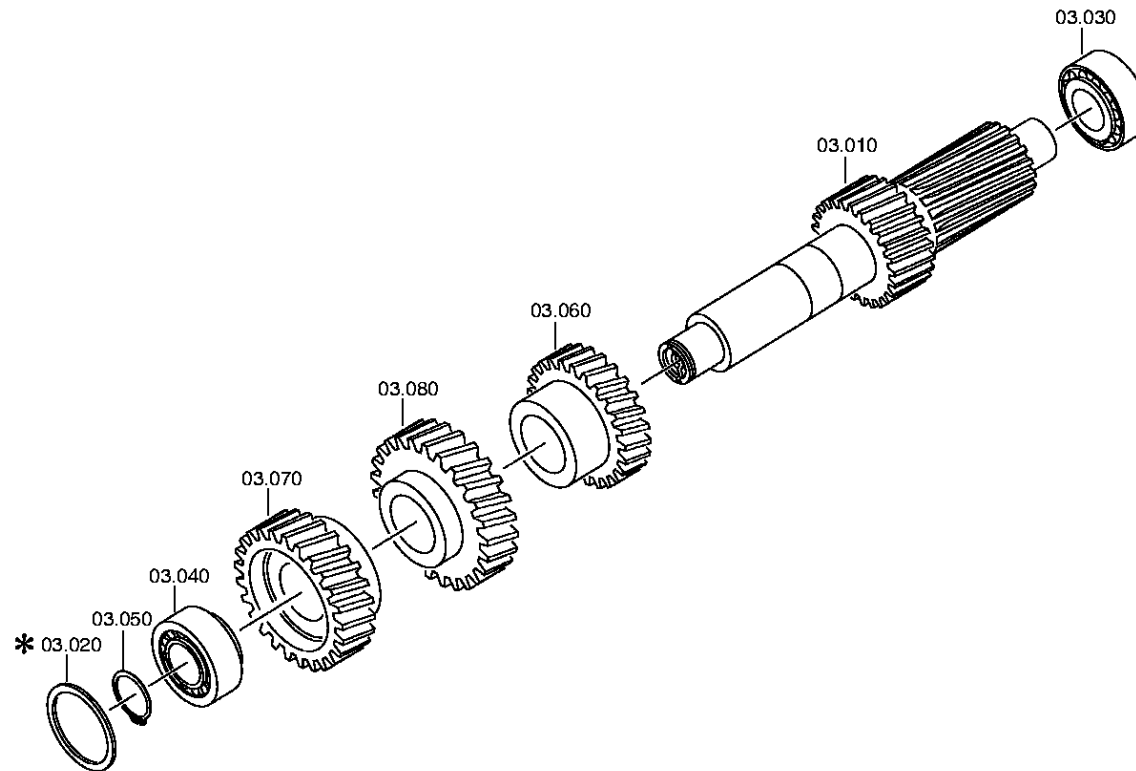
Plant: 068.02.57-1

Material-assembly-group-no: 1315.102.415



| Pos. | Material number | Customer material | Name         | Quantity | ME | Amend. no.   | Techn. Info.                              | Weight | Rep kit | Alternative material |
|------|-----------------|-------------------|--------------|----------|----|--------------|---|--------|---------|----------------------|
| ---  | 0730.007.127    |                   | SHIM         | 1        |    |              | A=1,10 IN 2050 309 090(2)                 | 0,000  |         |                      |
| ---  | 0730.007.126    |                   | SHIM         | 1        |    |              | A=1,05 IN 2050 309 090(2)                 | 0,000  |         |                      |
| ---  | 2050.309.065    |                   | SHIM         | 1        |    |              | A=1,0 IN 2050 309 090 C45E WW.F500 ZFN410 | 0,000  |         |                      |
| ---  | 0730.005.749    |                   | SHIM         | 1        |    |              | A=0,95 IN 2050 309 090(2)                 | 0,000  |         |                      |
| ---  | 0730.005.748    | 5 5258 0          | SHIM         | 1        |    |              | A=0,90 IN 2050 309 090(2)                 | 0,000  |         |                      |
| ---  | 0730.301.503    |                   | SHIM         | 1        |    |              | h=2,25                                    | 0,000  |         |                      |
| ---  | 0730.301.504    |                   | SHIM         | 1        |    |              | h=2,30                                    | 0,000  |         |                      |
| ---  | 0730.301.505    |                   | SHIM         | 1        |    |              | h=2,35                                    | 0,000  |         |                      |
| ---  | 0730.301.506    |                   | SHIM         | 1        |    |              | h=2,40                                    | 0,000  |         |                      |
| 260  | 0501.314.587    | 133-188-2550      | GASKET       | 1        |    |              |   | 0,000  |         |                      |
| 270  | 1315.302.040    |                   | SPACER RING  | 1        |    |              |   | 0,000  |         |                      |
| 274  | 0730.150.766    |                   | WASHER       | 2        |    |              |   | 0,000  |         |                      |
| 280  | 1315.202.055    |                   | CONNPLATE    | 1        |    |              | KPL.                                      | 0,000  |         |                      |
| /110 | 1315.302.072    |                   | CONNPLATE    | 1        |    |              |   | 0,000  |         |                      |
| /120 | 0750.111.575    |                   | SHAFT SEAL   | 1        |    |              | 30X37X4                                   | 0,000  |         |                      |
| /130 | 0730.260.398    |                   | BUSH         | 1        |    |              | A=25,00                                   | 0,000  |         |                      |
| /140 | 0730.260.398    |                   | BUSH         | 1        |    |              | A=25,00                                   | 0,000  |         |                      |
| /150 | 0750.111.575    |                   | SHAFT SEAL   | 1        |    |              | 30X37X4                                   | 0,000  |         |                      |
| /220 | 0750.111.575    |                   | SHAFT SEAL   | 1        |    |              | 30X37X4                                   | 0,000  |         |                      |
| /230 | 0730.260.398    |                   | BUSH         | 1        |    |              | A=25,00                                   | 0,000  |         |                      |
| /240 | 0730.260.398    |                   | BUSH         | 1        |    |              | A=25,00                                   | 0,000  |         |                      |
| /250 | 0750.111.575    |                   | SHAFT SEAL   | 1        |    |              | 30X37X4                                   | 0,000  |         |                      |
| 290  | ---             |                   | SHAFT SEAL   | 1        |    | C01002111D10 | 75X55X8                                   | 0,000  |         |                      |
| ---  | 0734.310.387    | 5 8002 0          | SHAFT SEAL   | 1        |    |              | 55X75X8/9,2 FA.CFW                        | 0,000  |         |                      |
| 520  | 0636.015.685    |                   | HEXAGON BOLT | 8        |    | Z00009177310 | M10X35                                    | 0,000  |         |                      |
| 580  | 0636.102.270    | 1877892           | HEXAGON BOLT | 3        |    | Z00009177410 | M10X60                                    | 0,000  |         |                      |





# Parts list

Page 1 from 3

Material number: 1316.055.126

16 S 181 /

Plant: 068.03.80-1

Material-assembly-group-no: 1316.103.803



| Pos. | Material number | Customer material | Name     | Quantity | ME | Amend. no.   | Techn. Info.                     | Weight | Rep kit | Alternative material |
|------|-----------------|-------------------|----------|----------|----|--------------|----------------------------------|--------|---------|----------------------|
| 10   | 1316.303.033    | 5 5340 0          | LAYSHAFT | 1        |    |              | ENTHALT.IN 1316 303 032(0)       | 0,000  |         |                      |
| 20   | ---             |                   | SHIM     | 1        |    |              | H= 1,85- 3,25( ABSTUFUNG:0,05MM) | 0,000  |         |                      |
| ---  | 0730.112.938    |                   | SHIM     | 1        |    | C01007375C10 | A=3,25                           | 0,000  |         |                      |
| ---  | 0730.112.937    |                   | SHIM     | 1        |    | C01007375C10 | A=3,20                           | 0,000  |         |                      |
| ---  | 0730.112.936    |                   | SHIM     | 1        |    | C01007375C10 | A=3,15                           | 0,000  |         |                      |
| ---  | 0730.112.935    |                   | SHIM     | 1        |    | C01007375C10 | A=3,10                           | 0,000  |         |                      |
| ---  | 0730.106.860    |                   | SHIM     | 1        |    | C01007375C10 | A=3,05 IN 0730 106 904(2)        | 0,000  |         |                      |
| ---  | 0730.106.917    |                   | SHIM     | 1        |    |              | A=3,00 IN 0730 106 904(2)        | 0,000  |         |                      |
| ---  | 0730.106.916    | 1833921           | SHIM     | 1        |    |              | A=2,95 IN 0730 106 904(2)        | 0,000  |         |                      |
| ---  | 0730.106.915    | 1833920           | SHIM     | 1        |    |              | A=2,90 IN 0730 106 904(2)        | 0,000  |         |                      |
| ---  | 0730.106.914    | 1833919           | SHIM     | 1        |    |              | A=2,85 IN 0730 106 904(2)        | 0,000  |         |                      |
| ---  | 0730.106.913    | 1833918           | SHIM     | 1        |    |              | A=2,80 IN 0730 106 904(2)        | 0,000  |         |                      |
| ---  | 0730.106.912    |                   | SHIM     | 1        |    |              | A=2,75 IN 0730 106 904(2)        | 0,000  |         |                      |
| ---  | 0730.106.911    | 1833917           | SHIM     | 1        |    |              | A=2,70 IN 0730 106 904(2)        | 0,000  |         |                      |
| ---  | 0730.106.910    | 1833916           | SHIM     | 1        |    |              | A=2,65 IN 0730 106 904(2)        | 0,000  |         |                      |
| ---  | 0730.106.909    | 1833915           | SHIM     | 1        |    |              | A=2,60 IN 0730 106 904(2)        | 0,000  |         |                      |
| ---  | 0730.106.908    | 1833914           | SHIM     | 1        |    |              | A=2,55 IN 0730 106 904(2)        | 0,000  |         |                      |
| ---  | 0730.100.799    |                   | SHIM     | 1        |    |              | A=2,50 IN 0730 106 904(2)        | 0,000  |         |                      |

# Parts list

Page 2 from 3

Material number: 1316.055.126

16 S 181 /

Plant: 068.03.80-1

Material-assembly-group-no: 1316.103.803



| Pos. | Material number | Customer material | Name           | Quantity | ME | Amend. no.   | Techn. Info.                        | Weight | Rep kit | Alternative material |
|------|-----------------|-------------------|----------------|----------|----|--------------|-------------------------------------|--------|---------|----------------------|
| ---  | 0730.100.800    | 1833898           | SHIM           | 1        |    |              | A=2,45 IN 0730 106<br>904(2)        | 0,000  |         |                      |
| ---  | 0730.100.801    |                   | SHIM           | 1        |    |              | A=2,40 IN 0730 106<br>904(2)        | 0,000  |         |                      |
| ---  | 0730.100.802    | 1833900           | SHIM           | 1        |    |              | A=2,35 IN 0730 106<br>904(2)        | 0,000  |         |                      |
| ---  | 0730.100.803    | 1833905           | SHIM           | 1        |    |              | A=2,30 IN 0730 106<br>904(2)        | 0,000  |         |                      |
| ---  | 0730.101.466    |                   | SHIM           | 1        |    |              | A=2,25 IN 0730 106<br>904(2)        | 0,000  |         |                      |
| ---  | 0730.101.467    | 1833906           | SHIM           | 1        |    |              | A=2,20 IN 0730 106<br>904(2)        | 0,000  |         |                      |
| ---  | 0730.101.468    | 1833907           | SHIM           | 1        |    |              | A=2,15 IN 0730 106<br>904(2)        | 0,000  |         |                      |
| ---  | 0730.101.469    | 1833909           | SHIM           | 1        |    |              | A=2,10 IN 0730 106<br>904(2)        | 0,000  |         |                      |
| ---  | 0730.101.470    | 1833910           | SHIM           | 1        |    |              | A=2,05 IN 0730 106<br>904(2)        | 0,000  |         |                      |
| ---  | 0730.101.471    |                   | SHIM           | 1        |    |              | A=2,00 IN 0730 106<br>904(2)        | 0,000  |         |                      |
| ---  | 0730.106.907    | 1833912           | SHIM           | 1        |    |              | A=1,95 IN 0730 106<br>904(2)        | 0,000  |         |                      |
| ---  | 0730.106.906    | 1833911           | SHIM           | 1        |    |              | A=1,90 IN 0730 106<br>904(2)        | 0,000  |         |                      |
| ---  | 0730.106.905    |                   | SHIM           | 1        |    |              | A=1,85 IN 0730 106<br>904(2)        | 0,000  |         |                      |
| 30   | 0750.117.009    | 820-400-2480      | TAROLLBEARING  | 1        |    |              | 49,2X103,1X43,6                     | 0,000  |         |                      |
| 40   | 0750.117.009    | 820-400-2480      | TAROLLBEARING  | 1        |    |              | 49,2X103,1X43,6                     | 0,000  |         |                      |
| 50   | ---             |                   | RETAINING RING | 1        |    | C01002877A10 | H= 2,40- 3,00(<br>ABSTUFUNG:0,05MM) | 0,000  |         |                      |
| ---  | 0630.531.065    | VOE12743111       | RETAINING RING | 1        |    |              | 50X3                                | 16     |         |                      |
| ---  | 0630.501.111    |                   | RETAINING RING | 1        |    |              | 50X2,95                             | 0,000  |         |                      |

# Parts list

Page 3 from 3

Material number: 1316.055.126

16 S 181 /

Plant: 068.03.80-1

Material-assembly-group-no: 1316.103.803



| Pos. | Material number | Customer material | Name           | Quantity | ME | Amend. no.   | Techn. Info.               | Weight | Rep kit | Alternative material |
|------|-----------------|-------------------|----------------|----------|----|--------------|----------------------------|--------|---------|----------------------|
| ---  | 0630.501.112    | 0002640551        | RETAINING RING | 1        |    |              | 50X2,9                     | 0,000  |         |                      |
| ---  | 0630.501.113    |                   | RETAINING RING | 1        |    |              | 50X2,85                    | 0,000  |         |                      |
| ---  | 0630.501.114    | 5004853           | RETAINING RING | 1        |    |              | 50X2,8                     | 0,000  |         |                      |
| ---  | 0630.501.115    |                   | RETAINING RING | 1        |    |              | 50X2,75                    | 0,000  |         |                      |
| ---  | 0630.501.116    | 5004854           | RETAINING RING | 1        |    |              | 50X2,7                     | 0,000  |         |                      |
| ---  | 0630.501.117    |                   | RETAINING RING | 1        |    |              | 50X2,65                    | 0,000  |         |                      |
| ---  | 0630.501.118    | 0002641251        | RETAINING RING | 1        |    |              | 50X2,6                     | 0,000  |         |                      |
| ---  | 0630.501.160    |                   | RETAINING RING | 1        |    |              | 50X2,55                    | 0,000  |         |                      |
| ---  | 0630.531.064    | 1663657           | RETAINING RING | 1        |    |              | 50X2,5                     | 0,100  |         |                      |
| ---  | 0630.501.159    |                   | RETAINING RING | 1        |    |              | 50X2,45                    | 0,000  |         |                      |
| ---  | 0630.501.148    | 0002641051        | RETAINING RING | 1        |    |              | 50X2,4                     | 0,000  |         |                      |
| 60   | 1316.303.005    |                   | HELICAL GEAR   | 1        |    |              | 3G/Z26 IN 1312 303 018(1)  | 0,000  |         |                      |
| 70   | 1316.303.030    |                   | HELICAL GEAR   | 1        |    |              | KON/Z39 IN 1316 303 029(1) | 0,000  |         |                      |
| 80   | 1316.303.065    |                   | HELICAL GEAR   | 1        |    |              | Z35 IN 1312 303 013(1)     | 0,000  |         |                      |
| 200  | 1315.303.060    |                   | GASKET         | 1        |    | C01005349C10 |                            | 0,000  |         |                      |
| 220  | ---             |                   | PUMP HOUSING   | 1        |    |              | GD*GSLs                    | 0,000  |         |                      |
| ---  | 1315.302.121    | 5 5355 0          | PUMP HOUSING   | 1        |    |              |                            | 0,000  |         |                      |
| ---  | 1315.302.117    |                   | PUMP HOUSING   | 1        |    |              |                            | 0,000  |         |                      |
| 240  | 1314.202.039    | 169-831-0020      | PUMP SHAFT     | 1        |    |              | KPL.                       | 0,000  |         |                      |
| 250  | 1315.303.027    | 169-833-0010      | ROTOR          | 1        |    |              |                            | 0,000  |         |                      |
| 270  | ---             |                   | PUMP COVER     | 1        |    |              | GD*GSLs                    | 0,000  |         |                      |
| ---  | 1315.302.120    | 5 5855 0          | PUMP COVER     | 1        |    |              |                            | 0,000  |         |                      |
| ---  | 1315.302.116    |                   | PUMP COVER     | 1        |    |              |                            | 0,000  |         |                      |
| 300  | 0636.015.684    |                   | HEXAGON BOLT   | 8        |    | Z00009177510 | M10X85                     | 0,000  |         |                      |
| 310  | 0636.015.685    |                   | HEXAGON BOLT   | 3        |    | Z00009177310 | M10X35                     | 0,000  |         |                      |
| 320  | 0636.102.270    | 1877892           | HEXAGON BOLT   | 1        |    | Z00009177410 | M10X60                     | 0,000  |         |                      |
| 330  | 0636.015.685    |                   | HEXAGON BOLT   | 2        |    | Z00009177310 | M10X35                     | 0,000  |         |                      |





# Parts list

Page 1 from 3

Material number: 1316.055.126

16 S 181 /

Plant: 068.04.13-1

Material-assembly-group-no: 1316.104.037



| Pos. | Material number | Customer material | Name           | Quantity | ME | Amend. no.   | Techn. Info.                                 | Weight | Rep kit | Alternative material |
|------|-----------------|-------------------|----------------|----------|----|--------------|--|--------|---------|----------------------|
| 10   | 1316.304.132    |                   | MAIN SHAFT     | 1        |    |              |  | 0,000  |         |                      |
| 40   | 0750.115.303    | 820-400-2490      | NEEDLE CAGE    | 1        |    |              | 92,0X100,0X63,0                              | 0,000  |         |                      |
| 50   | 1316.304.002    | 133-242-3900      | HELICAL GEAR   | 1        |    |              | 2G/Z38 IN 1316 304<br>005(1)                 | 0,000  |         |                      |
| 90   | 1356.204.007    |                   | SYNCHRONIZER   | 1        |    | Z00006981310 | KPL.1+2G*BK160<br>MOLYBDAEN*<br>ECOSPLIT 3+4 | 0,000  |         |                      |
| /10  | 1356.304.022    |                   | SYNCHROBODY    | 1        |    | Z00006981313 |  | 0,000  |         |                      |
| /20  | 1356.304.024    | 1865591           | SLIDING SLEEVE | 1        |    | Z00006981313 | ZF-BK 160                                    | 0,000  |         |                      |
| /30  | 1316.304.170    |                   | SYNCHRO RING   | 2        |    | Z00006981313 |  | 0,000  |         |                      |
| /50  | 1297.304.436    |                   | PRESSURE PIECE | 3        |    | Z00006981313 |  | 0,004  |         |                      |
| /60  | 0732.040.409    |                   | COMPRSPRING    | 3        |    | Z00006981313 |  | 0,002  |         |                      |
| /80  | 1316.304.156    |                   | CLUTCH BODY    | 2        |    | Z00006981313 |  | 0,000  |         |                      |
| 140  | 1312.304.084    | 820-400-2530      | BUSH           | 1        |    |              | ENTHALT.IN 1312 304<br>007(2)                | 0,000  |         |                      |
| 150  | 0750.115.327    | 5 8157 0          | NEEDLE CAGE    | 1        |    |              | 96,0X104,0X72,0                              | 0,000  |         |                      |
| 160  | 1316.304.010    | 133-242-3910      | HELICAL GEAR   | 1        |    |              | 1G/Z47 IN 1312 304<br>033(0)                 | 0,000  |         |                      |
| 180  | 1312.304.124    |                   | CLUTCH BODY    | 1        |    |              | ENTHALT.IN 1312 304<br>055(0)                | 0,000  |         |                      |
| 200  | 1316.304.133    | 820-400-2550      | BUSH           | 1        |    |              | A=50,00 IN 1312 304<br>010(2)                | 0,000  |         |                      |
| 210  | 0750.115.326    | 820-400-2560      | NEEDLE CAGE    | 1        |    |              | 90,0X98,0X50,0                               | 0,000  |         |                      |
| 220  | ---             |                   | HELICAL GEAR   | 1        |    |              |  | 0,000  |         |                      |
| ---  | 1316.304.012    | 133-242-3920      | HELICAL GEAR   | 1        |    |              | RG*Z44 IN 1312 304<br>125(0)                 | 0,000  |         |                      |
| 260  | 0750.117.678    | 820-400-2570      | TAROLLBEARING  | 1        |    |              | 80,0X140,0X36,5                              | 0,000  |         |                      |
| 270  | ---             |                   | RETAINING RING | 1        |    |              | H= 3,00- 3,65(<br>ABSTUFUNG:0,05MM)          | 0,000  |         |                      |
| ---  | 0630.501.316    | 820-400-2580      | RETAINING RING | 1        |    |              | 80X3,5                                       | 0,000  |         |                      |
| ---  | 0630.501.336    | 820-400-2581      | RETAINING RING | 1        |    |              | 80X3,45                                      | 0,000  |         |                      |
| ---  | 0630.501.315    | 820-400-2582      | RETAINING RING | 1        |    |              | 80X3,4                                       | 0,000  |         |                      |

# Parts list

Page 2 from 3

Material number: 1316.055.126

16 S 181 /

Plant: 068.04.13-1

Material-assembly-group-no: 1316.104.037



| Pos. | Material number | Customer material | Name           | Quantity | ME | Amend. no.   | Techn. Info.  | Weight | Rep kit | Alternative material |
|------|-----------------|-------------------|----------------|----------|----|--------------|---|--------|---------|----------------------|
| ---  | 0630.501.335    | 820-400-2583      | RETAINING RING | 1        |    |              | 80X3,35   | 0,000  |         |                      |
| ---  | 0630.501.314    | 820-400-2584      | RETAINING RING | 1        |    |              | 80X3,3  | 0,000  |         |                      |
| ---  | 0630.501.334    | 820-400-2585      | RETAINING RING | 1        |    |              | 80X3,25   | 0,000  |         |                      |
| ---  | 0630.501.313    | 820-400-2586      | RETAINING RING | 1        |    |              | 80X3,2  | 0,000  |         |                      |
| ---  | 0630.501.333    | 820-400-2587      | RETAINING RING | 1        |    |              | 80X3,15   | 0,000  |         |                      |
| ---  | 0630.501.312    | 820-400-2588      | RETAINING RING | 1        |    |              | 80X3,1  | 0,000  |         |                      |
| ---  | 0630.501.337    | 820-400-2589      | RETAINING RING | 1        |    |              | 80X3,55   | 0,000  |         |                      |
| ---  | 0630.501.338    | 820-400-2590      | RETAINING RING | 1        |    |              | 80X3,6  | 0,000  |         |                      |
| ---  | 0630.501.339    | 820-400-2591      | RETAINING RING | 1        |    |              | 80X3,65   | 0,000  |         |                      |
| 280  | 1316.332.109    |                   | PRESSURE DISC  | 1        |    | C01005404C10 |   | 0,000  |         |                      |
| 300  | 1312.304.150    | 820-400-2610      | PIPE           | 1        |    |              |   | 0,000  |         |                      |
| 320  | 0750.115.303    | 820-400-2490      | NEEDLE CAGE    | 1        |    |              | 92,0X100,0X63,0   | 0,000  |         |                      |
| 330  | 1316.304.008    | 133-242-3930      | HELICAL GEAR   | 1        |    |              | 3G/Z34 IN 1312 304<br>135(1)  | 0,000  |         |                      |
| 350  | 1316.304.190    |                   | CLUTCH BODY    | 1        |    | Z00006981311 | ZF-BK 144 O   | 0,000  |         |                      |
| 370  | 1356.204.006    |                   | SYNCHRONIZER   | 1        |    | Z00006981311 | KPL.3+4G*BK144<br>MOLYBDAEN*<br>ANSCHL.INTEGR<br>VERST*ECOSPLIT 3+4 | 0,000  |         |                      |
| /10  | 1356.304.019    |                   | SYNCHROBODY    | 1        |    | Z00006981313 |   | 0,000  |         |                      |
| /20  | 1356.304.023    |                   | SLIDING SLEEVE | 1        |    | Z00006981313 | ZF-BK 144   | 0,000  |         |                      |
| /30  | 1316.304.189    | 1832004           | SYNCHRONING    | 2        |    | Z00006981313 | ZF-BK 144   | 0,000  |         |                      |
| /50  | 1297.304.436    |                   | PRESSURE PIECE | 3        |    | Z00006981313 |   | 0,004  |         |                      |
| /60  | 0732.040.409    |                   | COMPRSPRING    | 3        |    | Z00006981313 |   | 0,002  |         |                      |
| 390  | 1316.304.190    |                   | CLUTCH BODY    | 1        |    | Z00006981311 | ZF-BK 144 O   | 0,000  |         |                      |
| 410  | 0750.101.158    |                   | THRUST WASHER  | 2        |    |              |   | 0,000  |         |                      |
| 420  | 0750.119.124    | 5 8910 0          | INNER RING     | 1        |    |              | 67,0X77,0X66,1  | 0,000  |         |                      |
| 430  | 0750.115.531    | 5 8908 0          | ROLLER CAGE    | 2        |    |              | 77,0X101,0X29,0   | 0,000  |         |                      |
| 440  | 1316.304.103    | 133-242-3940      | HELICAL GEAR   | 1        |    |              | Z32   | 0,000  |         |                      |
| 460  | ---             |                   | AXIAL WASHER   | 1        |    |              | H= 7,30- 8,00(<br>ABSTUFUNG:0,10MM)                                 | 0,000  |         |                      |

# Parts list

Page 3 from 3

Material number: 1316.055.126

16 S 181 /

Plant: 068.04.13-1

Material-assembly-group-no: 1316.104.037



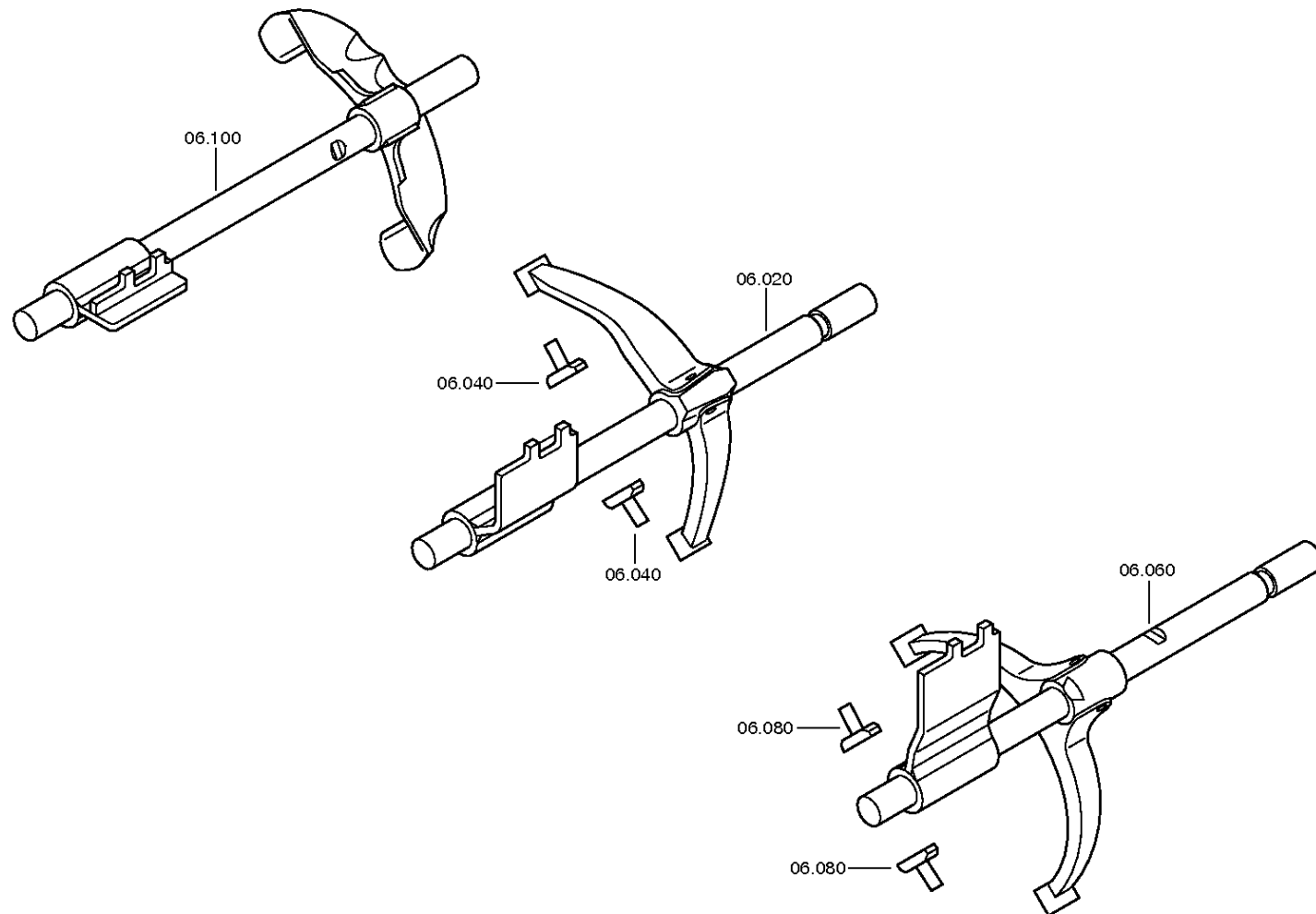
| Pos. | Material number | Customer material | Name           | Quantity | ME | Amend. no. | Techn. Info.                     | Weight | Rep kit | Alternative material |
|------|-----------------|-------------------|----------------|----------|----|------------|----------------------------------|--------|---------|----------------------|
| ---  | 1315.304.048    | 5 5877 0          | AXIAL WASHER   | 1        |    |            | A=8,00 IN 1315 304 042(2)        | 0,000  |         |                      |
| ---  | 1315.304.047    | 5 5859 0          | AXIAL WASHER   | 1        |    |            | A=7,90 IN 1315 304 042(2)        | 0,000  |         |                      |
| ---  | 1315.304.046    |                   | AXIAL WASHER   | 1        |    |            | A=7,80 IN 1315 304 042(2)        | 0,000  |         |                      |
| ---  | 1315.304.045    | 5 5858 0          | AXIAL WASHER   | 1        |    |            | A=7,70 IN 1315 304 042(2)        | 0,000  |         |                      |
| ---  | 1315.304.044    |                   | AXIAL WASHER   | 1        |    |            | A=7,60 IN 1315 304 042(2)        | 0,000  |         |                      |
| ---  | 1315.304.043    |                   | AXIAL WASHER   | 1        |    |            | A=7,50 IN 1315 304 042(2)        | 0,000  |         |                      |
| ---  | 1315.304.085    |                   | AXIAL WASHER   | 1        |    |            | A=7,40 IN 1315 304 042(2)        | 0,000  |         |                      |
| ---  | 1315.304.086    | 1833949           | AXIAL WASHER   | 1        |    |            | A=7,30 IN 1315 304 042(2)        | 0,000  |         |                      |
| 480  | 0750.117.232    | 820-400-2650      | TAROLLBEARING  | 1        |    |            | 42,0X40,3                        | 0,000  |         |                      |
| 500  | 1312.204.040    |                   | SPLIT RING     | 1        |    |            | GESTANZT                         | 0,000  |         |                      |
| /10  | ---             |                   | SPLIT RING     | 2        |    |            | H= 4,60- 5,00( ABSTUFUNG:0,10MM) | 0,000  |         |                      |
| ---  | 0730.107.023    | 820-400-2660      | SPLIT RING     | 2        |    |            | A=5,00 IN 0730 106 207(2)        | 0,000  |         |                      |
| ---  | 0730.107.022    | 820-400-2661      | SPLIT RING     | 2        |    |            | A=4,90 IN 0730 106 207(2)        | 0,000  |         |                      |
| ---  | 0730.107.021    | 820-400-2662      | SPLIT RING     | 2        |    |            | A=4,80 IN 0730 106 207(2)        | 0,000  |         |                      |
| ---  | 0730.107.020    | 820-400-2663      | SPLIT RING     | 2        |    |            | A=4,70 IN 0730 106 207(2)        | 0,000  |         |                      |
| ---  | 0730.107.019    | 820-400-2664      | SPLIT RING     | 2        |    |            | A=4,60 IN 0730 106 207(2)        | 0,000  |         |                      |
| /20  | 0730.062.781    | 820-400-2670      | RETAINING RING | 1        |    |            | ENTHALT.IN 0730 062 636(2)       | 0,000  |         |                      |

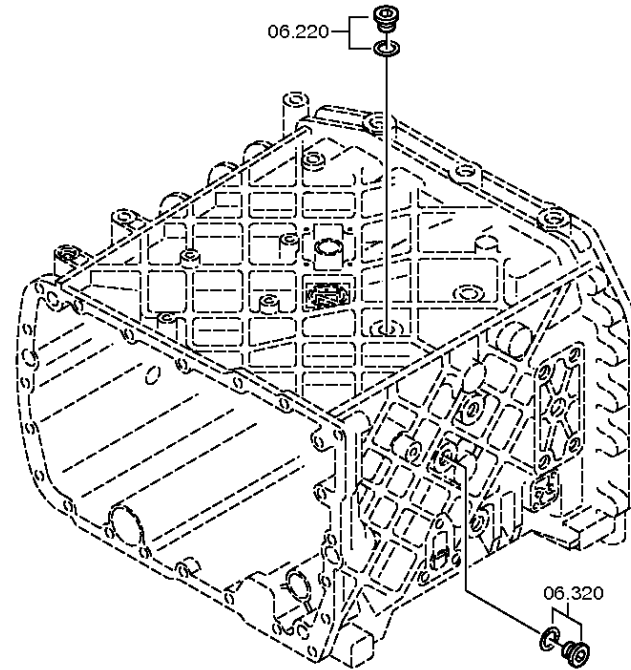
# Plant

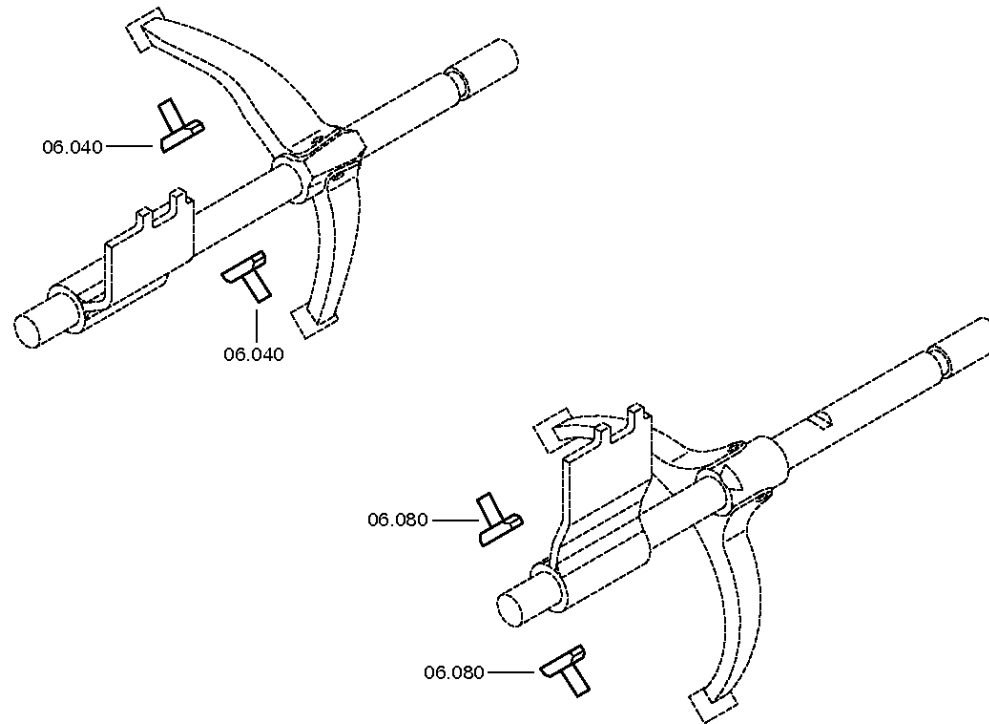
Page 1 from 3

Material number: 1316.055.126  
Plant: 068.06.01-1  
GEAR SHIFT SYSTEM

16 S 181 /  
GEAR SHIFT SYSTEM







# Parts list

Page 1 from 1

Material number: 1316.055.126

16 S 181 /

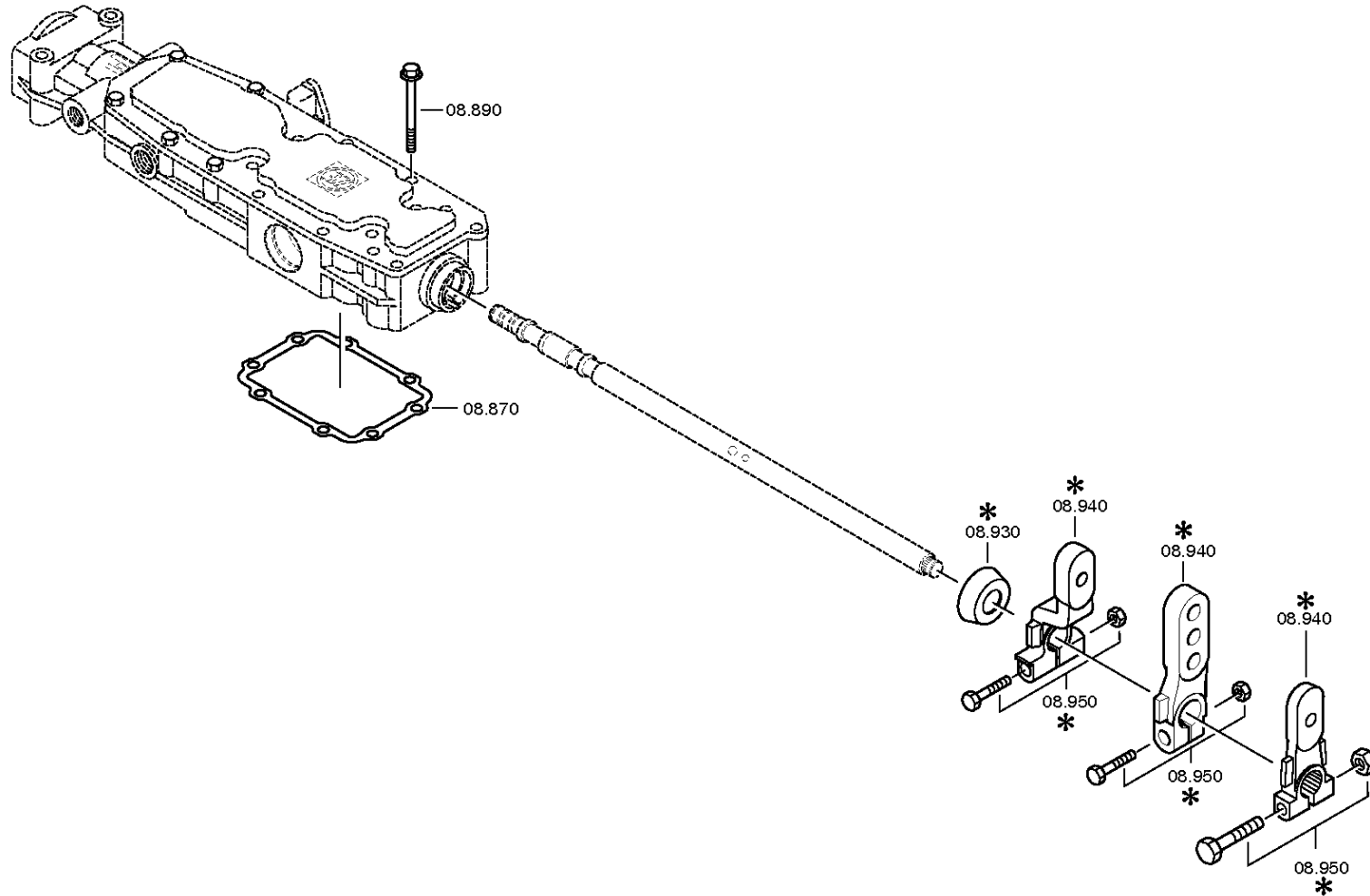
Plant: 068.06.01-1

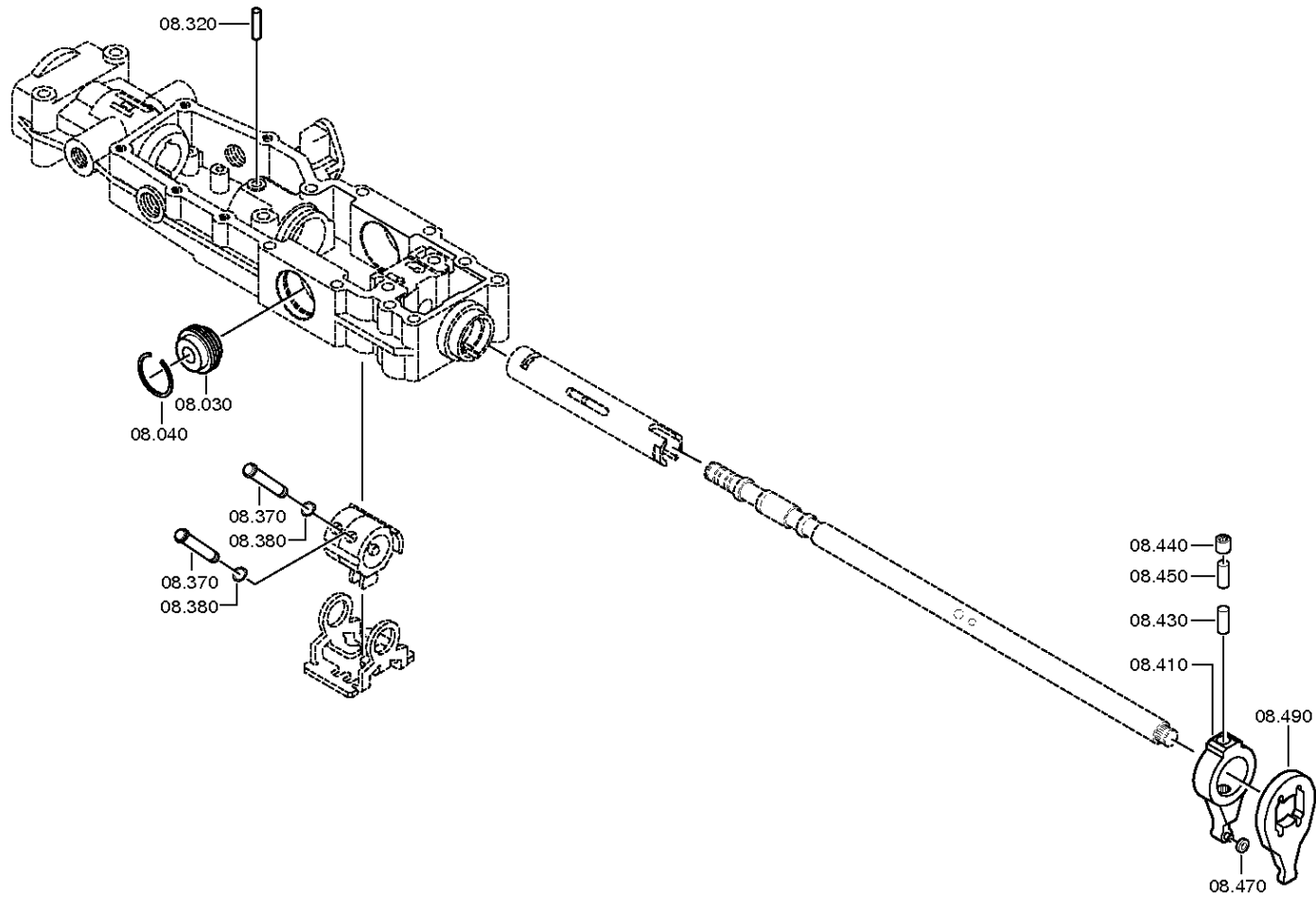
Material-assembly-group-no: 1316.106.008

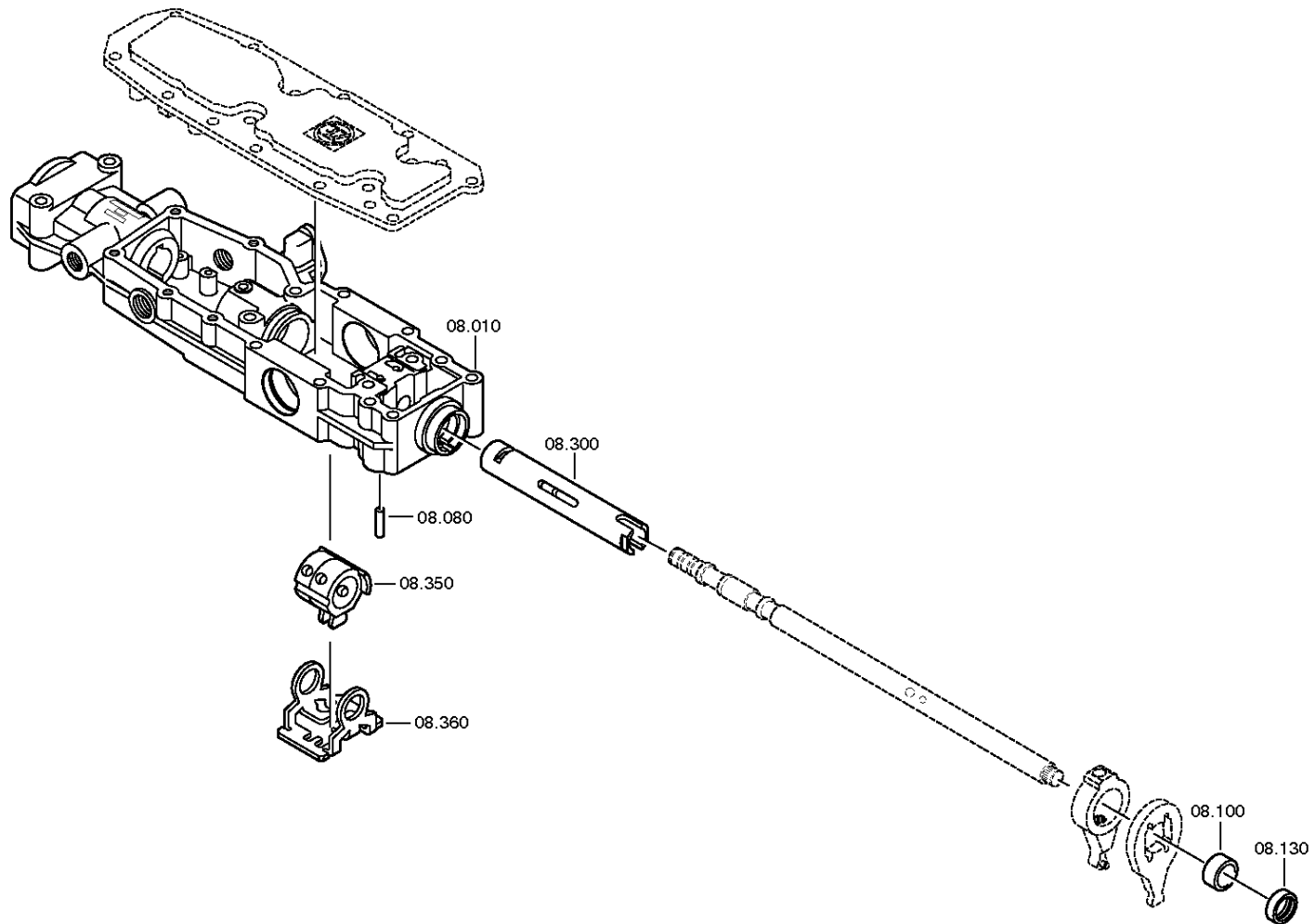


| Pos. | Material number | Customer material | Name            | Quantity | ME | Amend. no.   | Techn. Info.               | Weight | Rep kit | Alternative material |
|------|-----------------|-------------------|-----------------|----------|----|--------------|----------------------------|--------|---------|----------------------|
| 20   | 1316.206.055    |                   | GEAR SHIFT RAIL | 1        |    |              | 1+2GANG*LANG*WI            | 0,000  |         |                      |
| 40   | 1316.306.015    | 5 5342 0          | SLIDING PAD     | 2        |    |              |                            | 0,000  |         |                      |
| 60   | 1316.206.058    |                   | GEAR SHIFT RAIL | 1        |    |              | 3+4GANG*LANG*WI            | 0,000  |         |                      |
| /10  | 1316.306.030    |                   | GEAR SHIFT RAIL | 1        |    |              |                            | 0,000  |         |                      |
| /20  | 1325.306.028    |                   | GEAR SHIFT FORK | 1        |    |              | 3/4G                       | 0,000  |         |                      |
| /50  | 0631.329.086    | 0148103897        | SLOTPIN         | 1        |    |              | 8X40                       | 7,800  |         |                      |
| /60  | 0631.329.057    |                   | SLOTPIN         | 1        |    |              | 5X40                       | 3,200  |         |                      |
| 80   | 1316.306.015    | 5 5342 0          | SLIDING PAD     | 2        |    |              |                            | 0,000  |         |                      |
| 100  | 1316.206.061    |                   | GEAR SHIFT RAIL | 1        |    |              | R-GANG*LANG*WI             | 0,000  |         |                      |
| /10  | 1316.306.028    |                   | GEAR SHIFT RAIL | 1        |    |              |                            | 0,000  |         |                      |
| /20  | 1355.306.003    |                   | GEAR SHIFT FORK | 1        |    |              | RG                         | 0,000  |         |                      |
| /50  | 0631.329.086    | 0148103897        | SLOTPIN         | 1        |    |              | 8X40                       | 7,800  |         |                      |
| /60  | 0631.329.057    |                   | SLOTPIN         | 1        |    |              | 5X40                       | 3,200  |         |                      |
| 220  | ---             |                   | SCREW PLUG      | 1        |    | Z00010111513 | 35N.M*DICHTRING<br>M18X1,5 | 0,000  |         |                      |
| ---  | 0636.100.791    |                   | SCREW PLUG      | 1        |    | Z00010111521 | M18X1,5                    | 0,000  |         |                      |
| ---  | 0634.801.062    |                   | SEALING RING    | 1        |    | Z00010111521 | 18X24                      | 0,001  |         |                      |
| 320  | ---             |                   | SCREW PLUG      | 1        |    | Z00010111513 | 35N.M*DICHTRING<br>M18X1,5 | 0,000  |         |                      |
| ---  | 0636.100.791    |                   | SCREW PLUG      | 1        |    | Z00010111521 | M18X1,5                    | 0,000  |         |                      |
| ---  | 0634.801.062    |                   | SEALING RING    | 1        |    | Z00010111521 | 18X24                      | 0,001  |         |                      |







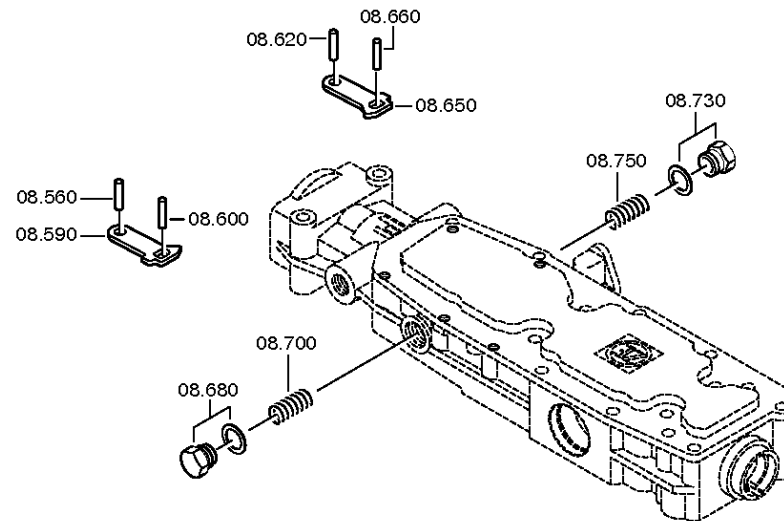


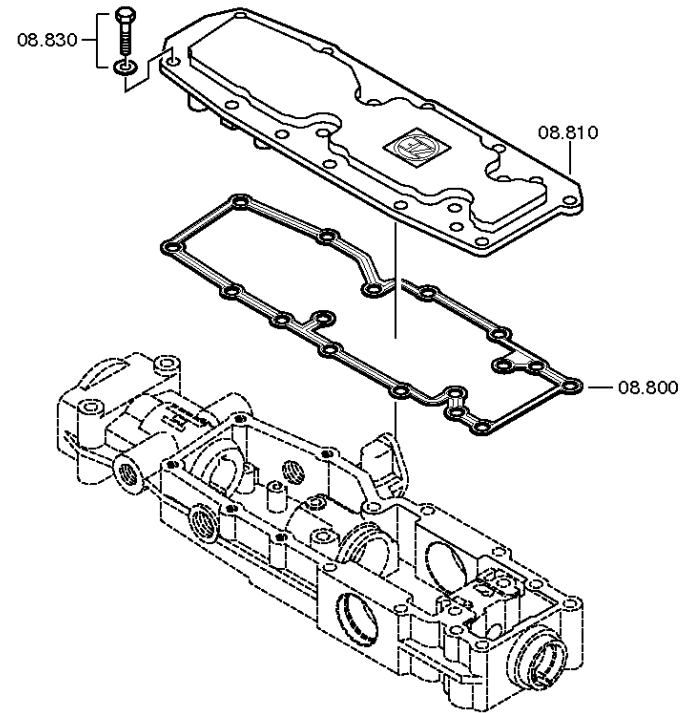
# Plant

Page 4 from 5

Material number: 1316.055.126  
Plant: 068.07.55-1  
GEAR SHIFT SHAFT

16 S 181 /  
GEAR SHIFT HOUSING





# Parts list

Page 1 from 2

Material number: 1316.055.126

16 S 181 /

Plant: 068.07.81-1

Material-assembly-group-no: 1316.108.817



| Pos. | Material number | Customer material | Name               | Quantity | ME | Amend. no.   | Techn. Info.               | Weight | Rep kit | Alternative material |
|------|-----------------|-------------------|--------------------|----------|----|--------------|----------------------------|--------|---------|----------------------|
| 10   | 1315.307.383    |                   | GEAR SHIFT HOUSING | 1        |    |              |                            | 0,000  |         |                      |
| 30   | 0501.209.212    | 5 5247 0          | DETENT             | 1        |    |              | KPL.                       | 0,000  |         |                      |
| 40   | 0630.532.130    |                   | V-RING             | 1        |    |              |                            | 0,000  |         |                      |
| 80   | 0631.306.123    | 190003901424      | CYLINDRICAL PIN    | 1        |    |              | 8X24                       | 10     |         |                      |
| 100  | 0730.260.703    |                   | BUSH               | 1        |    |              | A=13,70                    | 0,000  |         |                      |
| 130  | 0734.309.765    |                   | SHAFT SEAL         | 1        |    | C01005906F10 | 28X42X11 FA.SKT            | 0,000  |         |                      |
| 300  | 1315.307.294    |                   | QUILL SHAFT        | 1        |    |              | ENTHALT.IN 1315.307.293(1) | 0,000  |         |                      |
| 320  | 0731.201.702    |                   | PIN                | 1        |    |              |                            | 0,000  |         |                      |
| 350  | 1315.307.734    | 1882041           | DRIVER             | 1        |    | Z00011746810 |                            | 0,000  |         |                      |
| 360  | 1315.307.218    |                   | LOCKING PIECE      | 1        |    |              |                            | 0,000  |         |                      |
| 370  | 1316.208.003    |                   | PIN                | 2        |    |              | KPL.                       | 0,000  |         |                      |
| 380  | 0630.501.006    | SA 8220-02230     | RETAINING RING     | 2        |    |              | 10X1                       | 0,410  |         |                      |
| 410  | 1316.208.002    |                   | VALVE LEVER        | 1        |    |              | KPL.                       | 0,000  |         |                      |
| 430  | 0731.201.732    |                   | PIN                | 1        |    |              |                            | 0,000  |         |                      |
| 440  | 0635.303.019    |                   | NEEDLE BUSH        | 1        |    |              | 10X14X15                   | 0,000  |         |                      |
| 450  | 0731.201.732    |                   | PIN                | 1        |    |              |                            | 0,000  |         |                      |
| 470  | 1315.307.226    | 820-400-3340      | ROLLER             | 1        |    |              |                            | 0,000  |         |                      |
| 490  | 1315.307.292    |                   | LEVER              | 1        |    |              |                            | 0,000  |         |                      |
| 560  | 0631.306.832    |                   | CYLINDRICAL PIN    | 1        |    |              | 6X20                       | 0,000  |         |                      |
| 590  | 1315.307.203    |                   | DETENT LEVER       | 1        |    |              |                            | 0,000  |         |                      |
| 600  | 0631.306.832    |                   | CYLINDRICAL PIN    | 1        |    |              | 6X20                       | 0,000  |         |                      |
| 620  | 0631.306.832    |                   | CYLINDRICAL PIN    | 1        |    |              | 6X20                       | 0,000  |         |                      |
| 650  | 1315.307.203    |                   | DETENT LEVER       | 1        |    |              |                            | 0,000  |         |                      |
| 660  | 0631.306.832    |                   | CYLINDRICAL PIN    | 1        |    |              | 6X20                       | 0,000  |         |                      |
| 680  | ---             |                   | SCREW              | 1        |    | Z00010146310 | M22X1,5                    | 0,000  |         |                      |
| ---  | 1315.307.736    |                   | SCREW              | 1        |    | Z00010146312 | M22X1,5                    | 0,000  |         |                      |
| ---  | 0730.009.515    |                   | SEALING RING       | 1        |    | Z00010146312 | A22X27                     | 0,000  |         |                      |
| 700  | 0732.040.985    | 5 5874 0          | COMPRSPRING        | 1        |    |              |                            | 0,000  |         |                      |
| 730  | ---             |                   | SCREW              | 1        |    | Z00010146310 | M22X1,5                    | 0,000  |         |                      |
| ---  | 1315.307.736    |                   | SCREW              | 1        |    | Z00010146312 | M22X1,5                    | 0,000  |         |                      |

# Parts list

Page 2 from 2

Material number: 1316.055.126

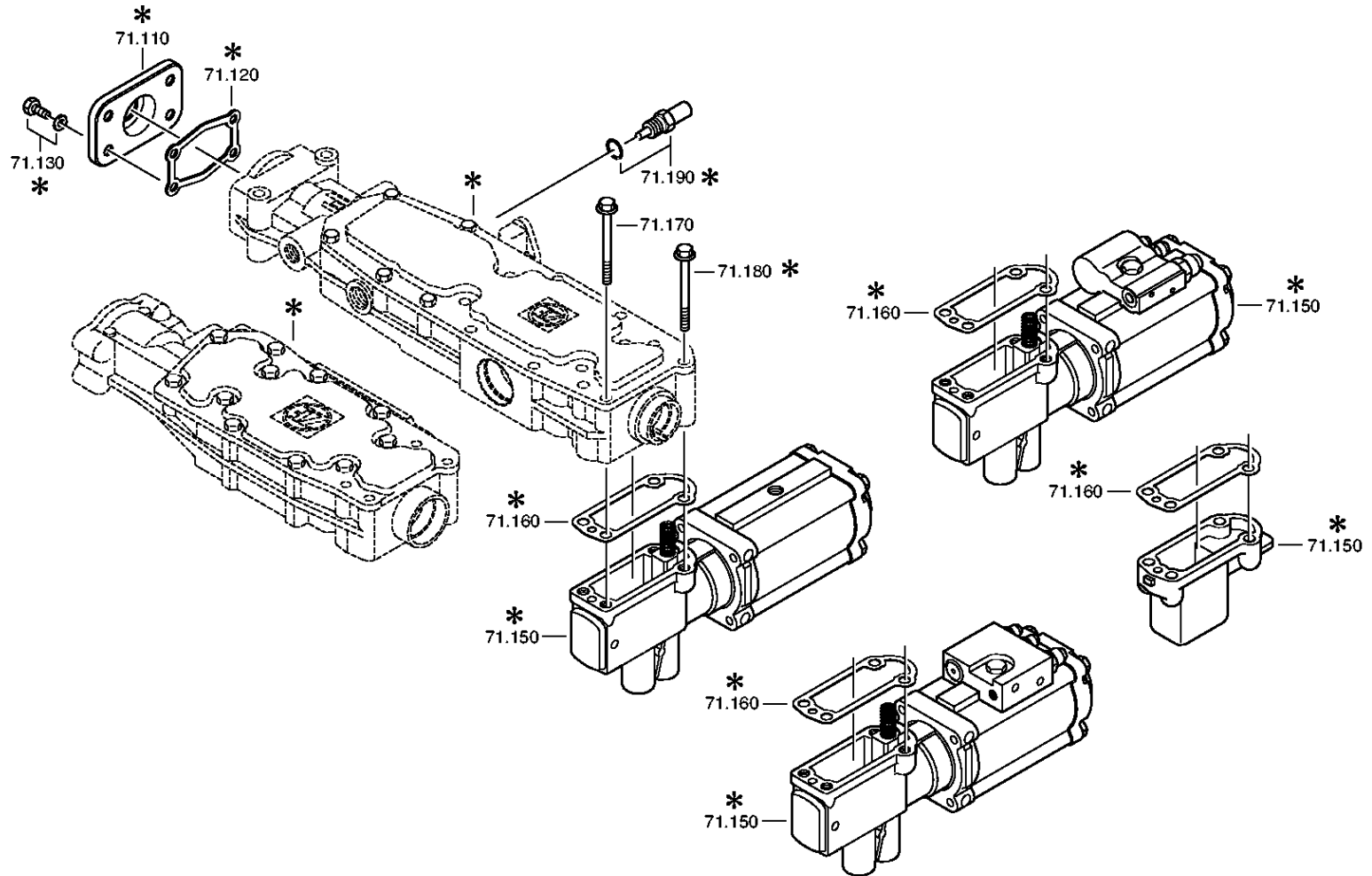
16 S 181 /

Plant: 068.07.81-1

Material-assembly-group-no: 1316.108.817



| Pos. | Material number | Customer material | Name           | Quantity | ME | Amend. no.   | Techn. Info. | Weight | Rep kit | Alternative material |
|------|-----------------|-------------------|----------------|----------|----|--------------|--------------|--------|---------|----------------------|
| ---  | 0730.009.515    |                   | SEALING RING   | 1        |    | Z00010146312 | A22X27       | 0,000  |         |                      |
| 750  | 0732.040.985    | 5 5874 0          | COMPRSPRING    | 1        |    |              |              | 0,000  |         |                      |
| 800  | 0501.324.072    |                   | GASKET         | 1        |    | C01003353F10 |              | 0,000  |         |                      |
| 810  | 1315.307.286    |                   | COVER          | 1        |    | C01000020A10 |              | 0,000  |         |                      |
| 830  | ---             |                   | HEXAGON BOLT   | 5        |    |              | M8X25        | 0,000  |         |                      |
| ---  | 0636.016.401    |                   | HEXAGON BOLT   | 5        |    |              | M8X25        | 0,000  |         |                      |
| ---  | 0630.100.295    |                   | WASHER         | 5        |    | Z00007158414 |              | 0,000  |         |                      |
| 870  | 1315.307.013    | 133-138-1020      | GASKET         | 1        |    |              |              | 0,000  |         |                      |
| 890  | 0736.300.137    | 1197869           | HEXAGON BOLT   | 8        |    | Z00009195410 | M8X80 M8X80  | 0,000  |         |                      |
| 930  | 1341.307.104    |                   | PROTECTING CAP | 1        |    | C01007034F10 |              | 0,000  |         |                      |





## Plant

Page 2 from 3

Material number: 1316.055.126

Plant: 068.08.40-1

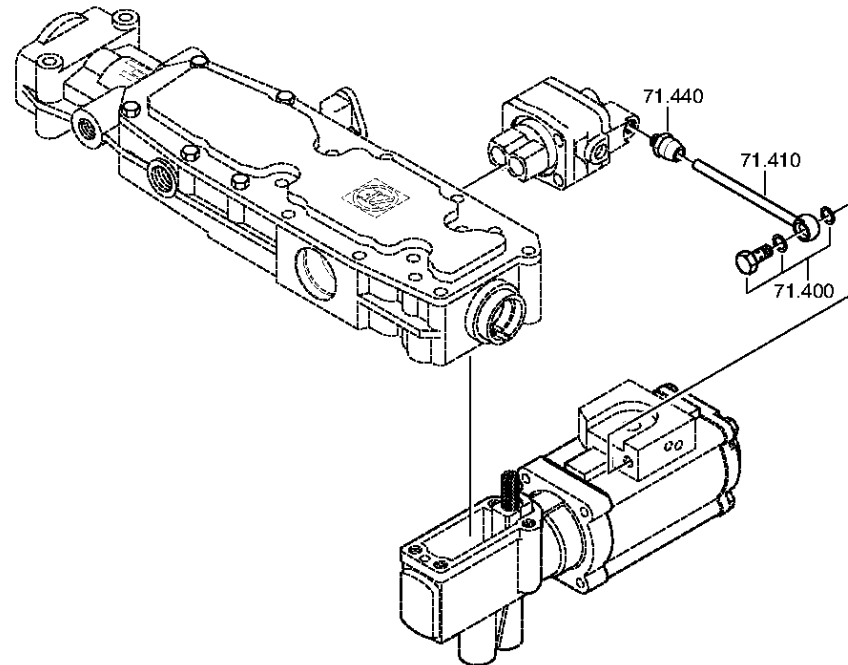
END COVER

16 S 181 /

END COVER



**There is presently no plate available for this parts list/ assembly.**



# Parts list

Page 1 from 1

Material number: 1316.055.126

16 S 181 /

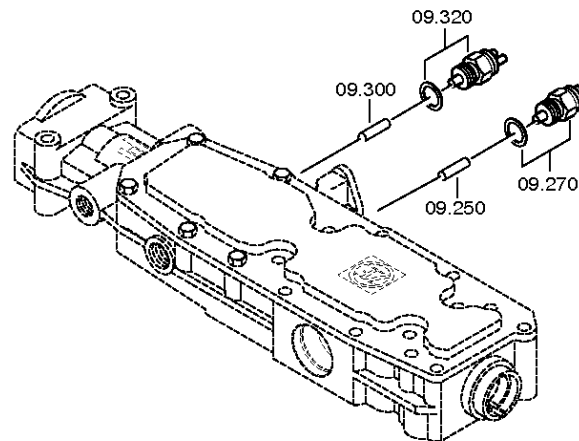
Plant: 062.08.30-1

Material-assembly-group-no: 1316.171.403



| Pos. | Material number | Customer material | Name            | Quantity | ME | Amend. no.   | Techn. Info.         | Weight | Rep kit | Alternative material |
|------|-----------------|-------------------|-----------------|----------|----|--------------|----------------------|--------|---------|----------------------|
| 110  | 1341.307.113    |                   | COVER           | 1        |    | Z00009271410 |                      | 0,000  |         |                      |
| 130  | ---             |                   | HEXAGON BOLT    | 4        |    | Z00007891111 | M8X20                | 0,000  |         |                      |
| ---  | 0636.100.796    |                   | HEXAGON BOLT    | 4        |    | Z00007891120 | M8X20                | 0,000  |         |                      |
| ---  | 0630.100.295    |                   | WASHER          | 4        |    | Z00007158414 |                      | 0,000  |         |                      |
| 150  | 0501.211.805    |                   | PNEUMSERVUNIT   | 1        |    | C01007387A10 | KPL. PSE1 MIT 3/2 WV | 0,000  |         |                      |
| 160  | 1315.307.242    |                   | GASKET          | 1        |    |              |                      | 0,000  |         |                      |
| 170  | 0736.300.137    | 1197869           | HEXAGON BOLT    | 2        |    | Z00009195410 | M8X80 M8X80          | 0,000  |         |                      |
| 180  | ---             |                   | HEXAGON BOLT    | 2        |    | Z00009195410 | M8X80                | 0,000  |         |                      |
| ---  | 0736.300.137    | 1197869           | HEXAGON BOLT    | 2        |    | Z00009195414 | M8X80 M8X80          | 0,000  |         |                      |
| 400  | ---             |                   | UNION SCREW     | 1        |    | Z00010274712 |                      | 0,000  |         |                      |
| ---  | 0637.835.808    |                   | UNION SCREW     | 1        |    | Z00013005810 |                      | 0,000  |         |                      |
| ---  | 0634.801.331    |                   | SEALING RING    | 1        |    | Z00010274715 | 12X18                | 0,000  |         |                      |
| 410  | 0501.218.440    |                   | PIPE            | 1        |    | Z00010096010 | KPL.                 | 0,000  |         |                      |
| 440  | ---             |                   | PLUG CONNECTOR  | 1        |    |              | ROHR 8X1*RAUFOSS     | 0,000  |         |                      |
| ---  | 0637.885.529    |                   | PLUG CONNECTION | 1        |    |              |                      | 0,000  |         |                      |





# Parts list

Page 1 from 1

Material number: 1316.055.126

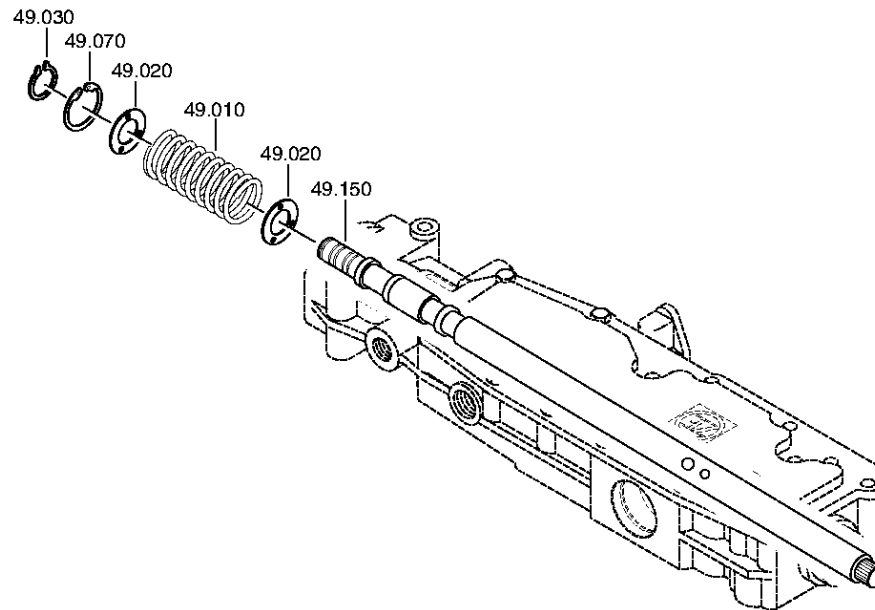
16 S 181 /

Plant: 068.09.01-1

Material-assembly-group-no: 1316.109.022



| Pos. | Material number | Customer material | Name           | Quantity | ME | Amend. no.   | Techn. Info.  | Weight | Rep kit | Alternative material |
|------|-----------------|-------------------|----------------|----------|----|--------------|---|--------|---------|----------------------|
| 10   | 6038.202.043    | 5 6065 0          | CUT-OFF VALVE  | 1        |    | C01002143C10 | KPL.H-H*<br>ZULUFTDROSSEL 1,55                        | 0,000  |         |                      |
| 30   | 0501.209.188    | 5 6102 0          | BALL ROLLER    | 1        |    |              | KPL.  | 0,000  |         |                      |
| 50   | 0501.209.188    | 5 6102 0          | BALL ROLLER    | 1        |    |              | KPL.  | 0,000  |         |                      |
| 70   | 0634.313.505    |                   | O-RING         | 1        |    |              | 42X3  | 0,000  |         |                      |
| 90   | ---             |                   | HEXAGON BOLT   | 4        |    | Z00007054112 | M8X65   | 0,000  |         |                      |
| ---  | 0636.100.519    |                   | HEXAGON BOLT   | 4        |    | Z00007054110 | M8X65   | 0,000  |         |                      |
| ---  | 0630.100.295    |                   | WASHER         | 4        |    | Z00007158414 |   | 0,000  |         |                      |
| 150  | ---             |                   | SCREW          | 1        |    | Z00010146310 | M22X1,5   | 0,000  |         |                      |
| ---  | 1315.307.736    |                   | SCREW          | 1        |    | Z00010146312 | M22X1,5   | 0,000  |         |                      |
| ---  | 0730.009.515    |                   | SEALING RING   | 1        |    | Z00010146312 | A22X27  | 0,000  |         |                      |
| 160  | 1315.307.384    |                   | BOLT           | 1        |    | C01003958B10 | ENTHALT.IN 1250 307<br>589(2)                         | 0,000  |         |                      |
| 170  | 0732.041.612    |                   | COMPRSPRING    | 1        |    |              |   | 0,000  |         |                      |
| 250  | 0731.201.446    |                   | PIN            | 1        |    |              | ENTHALT.IN 0731 201<br>445(2)                         | 0,000  |         |                      |
| 270  | ---             |                   | SWITCH         | 1        |    | Z00004287211 | OEFF*45N.M*<br>DICHTRING*<br>BAJONETT*<br>SCHUTZKAPPE | 0,000  |         |                      |
| ---  | 0501.216.474    |                   | SWITCH         | 1        |    |              |   | 0,050  |         |                      |
| ---  | 0634.801.062    |                   | SEALING RING   | 1        |    |              | 18X24   | 0,001  |         |                      |
| ---  | 0700.300.427    |                   | PROTECTING CAP | 1        |    |              |   | 0,005  |         |                      |
| 300  | 0731.208.230    |                   | PIN            | 1        |    |              | A=30,0  | 0,000  |         |                      |
| 320  | ---             |                   | SWITCH         | 1        |    | Z00004287211 | SCHL*45N.M*<br>DICHTRING*<br>BAJONETT*<br>SCHUTZKAPPE | 0,000  |         |                      |
| ---  | 0501.210.058    | 1864900531        | SWITCH         | 1        |    |              | KPL.  | 0,000  |         |                      |
| ---  | 0634.801.062    |                   | SEALING RING   | 1        |    |              | 18X24   | 0,001  |         |                      |
| ---  | 0700.300.427    |                   | PROTECTING CAP | 1        |    |              |   | 0,005  |         |                      |



# Parts list

Page 1 from 1

Material number: 1316.055.126

16 S 181 /

Plant: 068.12.08-1

Material-assembly-group-no: 1316.149.422



| Pos. | Material number | Customer material | Name             | Quantity | ME | Amend. no.   | Techn. Info.                  | Weight | Rep kit | Alternative material |
|------|-----------------|-------------------|------------------|----------|----|--------------|-------------------------------|--------|---------|----------------------|
| 10   | 0732.040.237    | 2150036500        | COMPRSPRING      | 1        |    |              |                               | 30     |         |                      |
| 20   | 0730.301.376    | 1884285           | WASHER           | 2        |    | Z00008917410 |                               | 0,000  |         |                      |
| 30   | 0630.532.138    | 5004143           | V-RING           | 1        |    |              |                               | 0,000  |         |                      |
| 70   | 0630.502.022    |                   | RETAINING RING   | 1        |    |              | 40X1,75                       | 4,800  |         |                      |
| 150  | 1315.307.327    |                   | GEAR SHIFT SHAFT | 1        |    |              | ENTHALT.IN 1315 307<br>296(1) | 0,000  |         |                      |

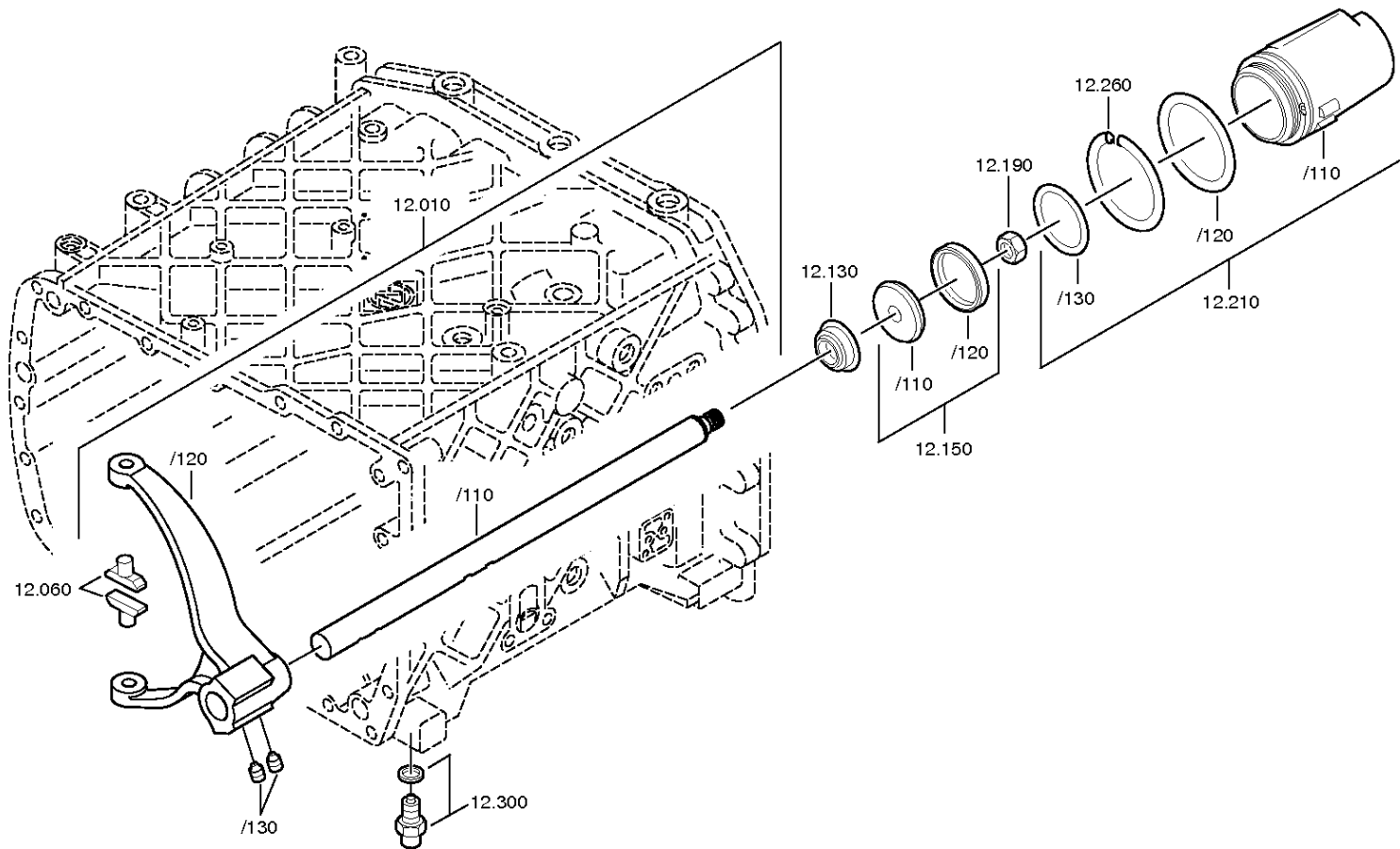


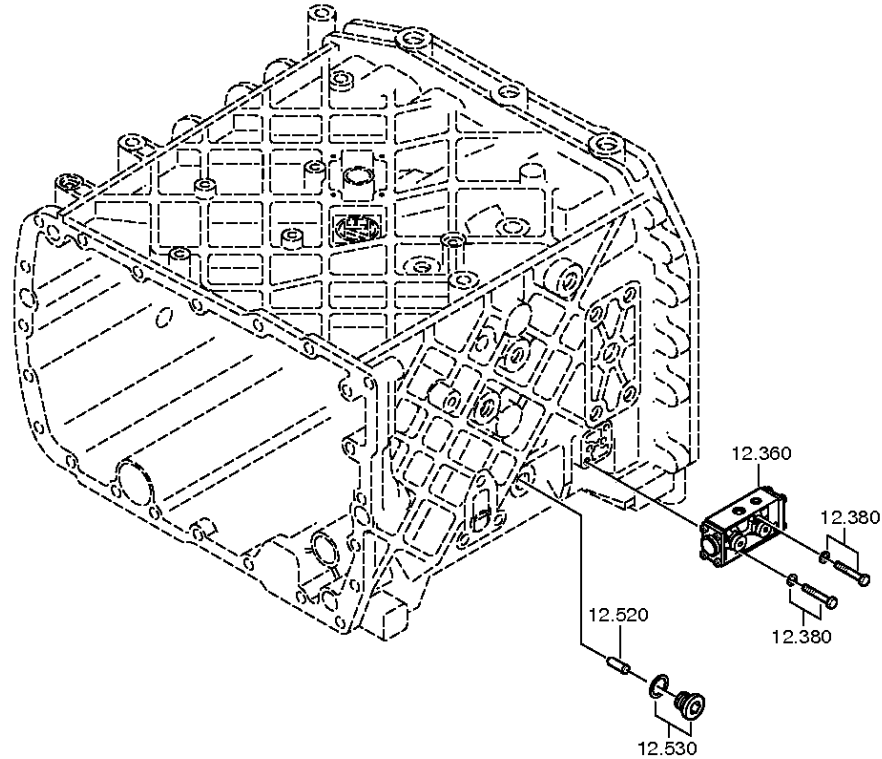
# Plant

Page 1 from 2

Material number: 1316.055.126  
Plant: 068.40.04-1  
GV-SHIFT SYSTEM

16 S 181 /  
GV-SHIFT SYSTEM





# Parts list

Page 1 from 1

Material number: 1316.055.126

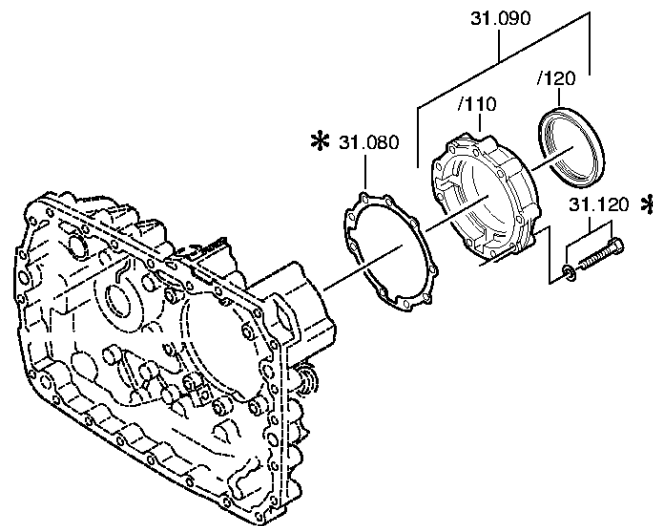
16 S 181 /

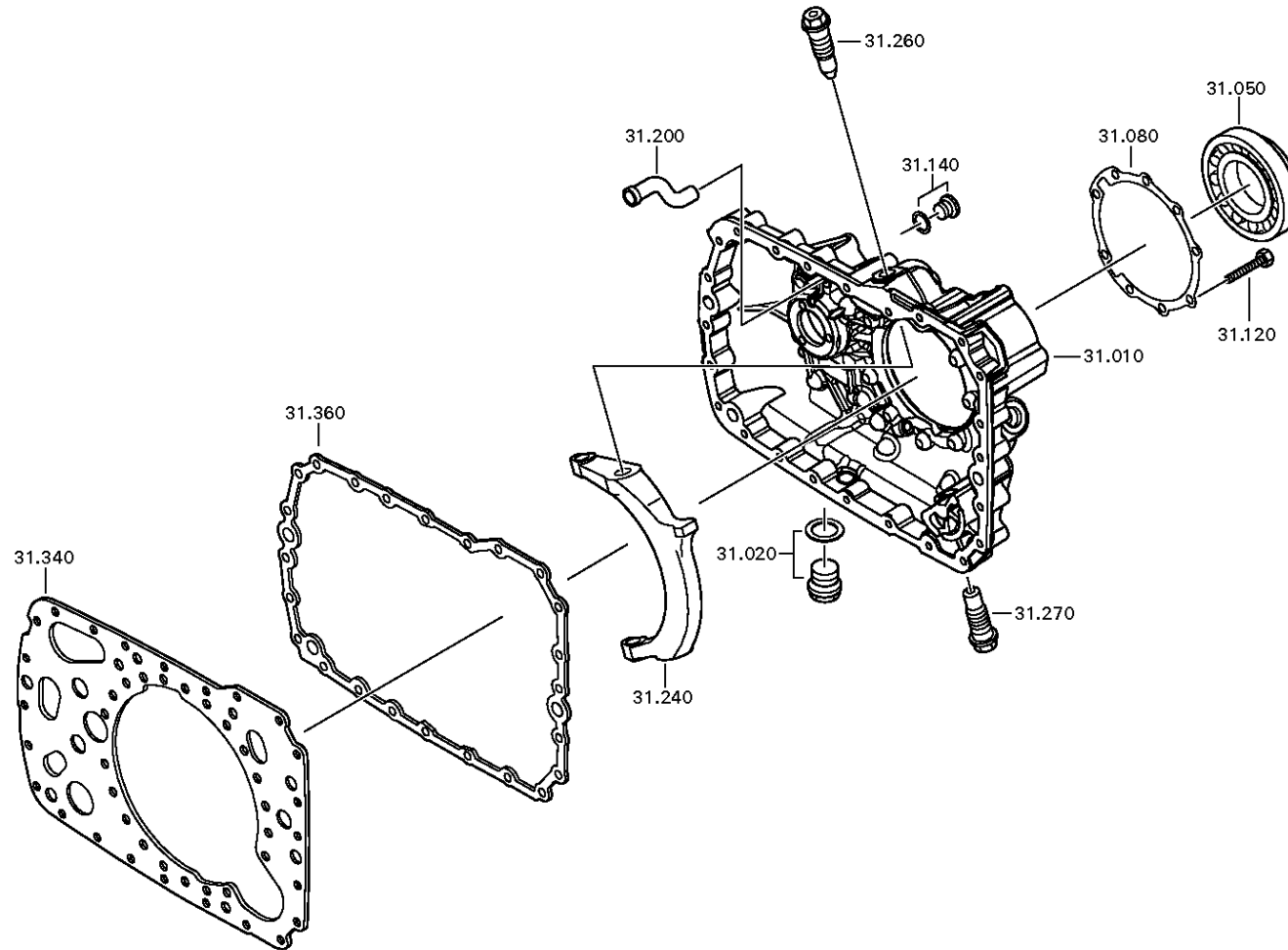
Plant: 068.40.04-1

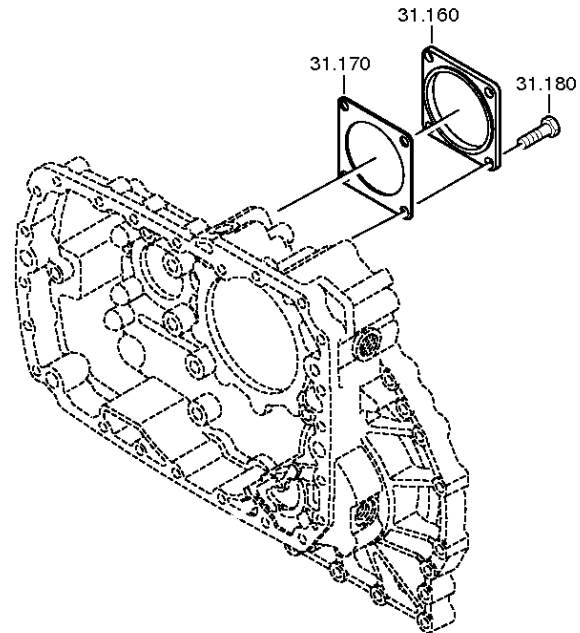
Material-assembly-group-no: 1316.112.012

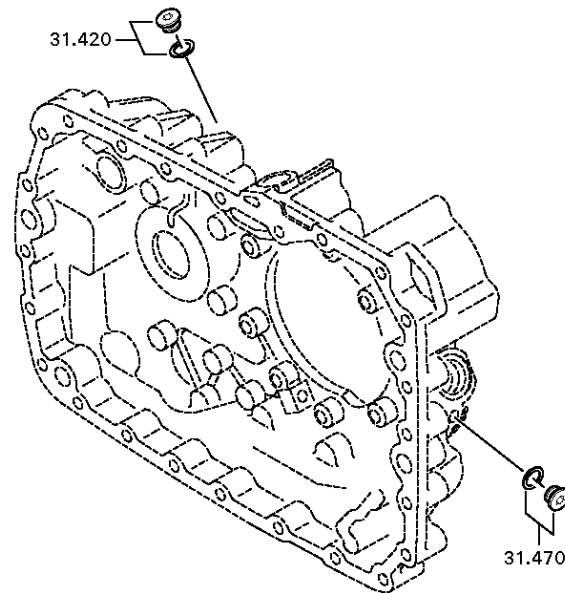


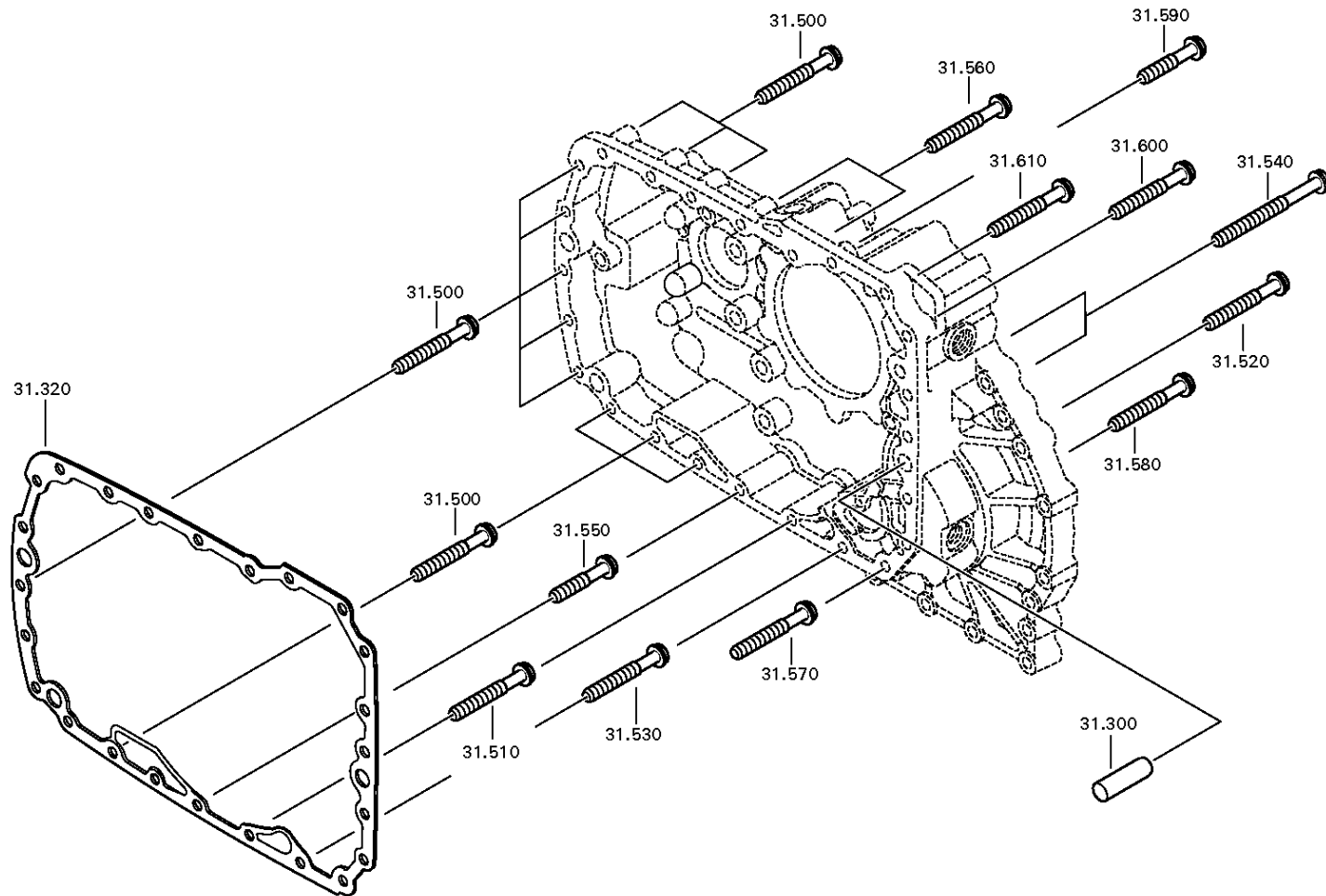
| Pos. | Material number | Customer material | Name             | Quantity | ME | Amend. no.   | Techn. Info.                  | Weight | Rep kit | Alternative material |
|------|-----------------|-------------------|------------------|----------|----|--------------|-------------------------------|--------|---------|----------------------|
| 10   | 1316.212.010    |                   | GEAR SHIFT RAIL  | 1        |    |              | KPL.GV.LAG.GEH.1              | 0,000  |         |                      |
| /110 | 1316.312.023    |                   | GEAR SHIFT RAIL  | 1        |    |              |                               | 0,000  |         |                      |
| /120 | 1315.312.074    |                   | GEAR SHIFT FORK  | 1        |    |              | GV ECO 3                      | 0,000  |         |                      |
| /130 | ---             |                   | SET SCREW        | 2        |    |              | M12X1                         | 0,000  |         |                      |
| ---  | 1315.312.047    | 42172912          | SET SCREW        | 2        |    |              |                               | 0,000  |         |                      |
| 60   | 1316.306.015    | 5 5342 0          | SLIDING PAD      | 2        |    |              |                               | 0,000  |         |                      |
| 130  | 0750.112.131    | 820-400-2880      | FLANGE PACKING   | 1        |    | Z00003588010 | 25X40X15                      | 0,000  |         |                      |
| 150  | 1315.212.008    | 1831971           | PISTON           | 1        |    |              | KPL.                          | 0,000  |         |                      |
| /110 | ---             |                   | PISTON           | 1        |    |              | GV SINTER/STAHL               | 0,000  |         |                      |
| ---  | 1315.312.020    |                   | PISTON           | 1        |    |              | GV                            | 0,000  |         |                      |
| ---  | 1315.312.003    |                   | PISTON           | 1        |    |              | GV                            | 0,000  |         |                      |
| /120 | 0750.112.177    | 172-255-1720      | DOUBLE U-PACKING | 1        |    |              | 55X63X9,4                     | 0,000  |         |                      |
| 190  | 0737.300.037    |                   | LOCKING NUT      | 1        |    | Z00008929010 | MS16X1,5                      | 0,000  |         |                      |
| 210  | 1316.212.007    |                   | CYLINDER         | 1        |    |              | KPL.                          | 0,000  |         |                      |
| /110 | 1316.312.015    |                   | CYLINDER         | 1        |    |              | ENTHALT.IN 1315 312<br>033(1) | 0,000  |         |                      |
| /120 | 0634.313.018    |                   | O-RING           | 1        |    |              | 82X3                          | 0,000  |         |                      |
| /130 | 0634.313.320    | 820-400-2910      | O-RING           | 1        |    |              | 67X3                          | 0,003  |         |                      |
| 260  | 1315.312.034    |                   | SPRING           | 1        |    |              |                               | 0,000  |         |                      |
| 300  | ---             |                   | DETENT PLUNGER   | 1        |    |              | 235N*50N.M                    | 0,000  |         |                      |
| ---  | 1324.207.033    | 1878700           | DETENT PLUNGER   | 1        |    |              | KPL. *235 N                   | 0,000  |         |                      |
| ---  | 0730.008.604    |                   | SEALING RING     | 1        |    | C01009860C10 |                               | 0,000  |         |                      |
| 360  | 0501.219.309    |                   | 5/2 WAY VALVE    | 1        |    | Z00015060510 |                               | 0,000  |         |                      |
| 380  | ---             |                   | HEXAGON BOLT     | 2        |    |              | M6X40                         | 0,000  |         |                      |
| ---  | 0636.010.740    |                   | HEXAGON BOLT     | 2        |    |              | M6X40                         | 0,000  |         |                      |
| ---  | 0630.001.139    | S0643476          | WASHER           | 2        |    | Z00007164311 |                               | 0,000  |         |                      |
| 520  | 1295.212.006    |                   | PIN              | 1        |    |              | KPL.                          | 0,000  |         |                      |
| 530  | ---             |                   | SCREW PLUG       | 1        |    | Z00010111513 | 35N.M*DICHTRING<br>M18X1,5    | 0,000  |         |                      |
| ---  | 0636.100.791    |                   | SCREW PLUG       | 1        |    | Z00010111521 | M18X1,5                       | 0,000  |         |                      |
| ---  | 0634.801.062    |                   | SEALING RING     | 1        |    | Z00010111521 | 18X24                         | 0,001  |         |                      |













# Parts list

Page 1 from 2

Material number: 1316.055.126

16 S 181 /

Plant: 068.43.21-1

Material-assembly-group-no: 1315.131.047



| Pos. | Material number | Customer material | Name              | Quantity | ME | Amend. no.   | Techn. Info.                  | Weight | Rep kit | Alternative material |
|------|-----------------|-------------------|-------------------|----------|----|--------------|-------------------------------|--------|---------|----------------------|
| 10   | 1315.301.224    |                   | HOUSING           | 1        |    |              | ENTHALT.IN 1315 301<br>222(0) | 0,000  |         |                      |
| 20   | ---             |                   | SCREW PLUG        | 1        |    | Z00010112111 | 60N.M*DICHTRING<br>M24X1,5    | 0,000  |         |                      |
| ---  | 0636.304.088    |                   | SCREW PLUG        | 1        |    | Z00010112110 | M24X1,5                       | 0,000  |         |                      |
| ---  | 0730.008.637    |                   | SEALING RING      | 1        |    | Z00010112110 | A24X29                        | 0,000  |         |                      |
| 50   | 0750.116.394    | 5 8092 0          | BALL BEARING      | 1        |    | C01007214E10 |                               | 0,000  |         |                      |
| 80   | 1315.331.001    |                   | GASKET            | 1        |    | C01005350C10 |                               | 0,000  |         |                      |
| 90   | 1315.231.004    |                   | COVER             | 1        |    |              | KPL.                          | 0,000  |         |                      |
| /120 | 0750.111.341    | 8204002990        | SHAFT SEAL        | 1        |    |              | 105X130X12                    | 0,000  |         |                      |
| 120  | 0636.016.405    |                   | HEXAGON BOLT      | 9        |    | Z00007060111 | M10X60                        | 0,000  |         |                      |
| 140  | ---             |                   | SCREW PLUG        | 1        |    | C01004359F10 | 15N.M*DICHTRING<br>M10X1      | 0,000  |         |                      |
| ---  | 0636.100.793    |                   | SCREW PLUG        | 1        |    | Z00010111613 | M10X1                         | 0,000  |         |                      |
| ---  | 0730.008.055    |                   | SEALING RING      | 1        |    |              | A10X14                        | 0,000  |         |                      |
| 160  | 1328.301.170    | 1878388           | COVER             | 1        |    | Z00008068010 |                               | 0,000  |         |                      |
| 170  | 1238.308.201    | 5006880           | GASKET            | 1        |    |              | ENTHALT.IN 1238 308<br>202(2) | 0,000  |         |                      |
| 180  | 0636.016.406    |                   | HEXAGON BOLT      | 4        |    | Z00007061014 | M12X25                        | 0,000  |         |                      |
| 200  | 1296.301.008    | 133-881-0130      | SPRAY TUBE        | 1        |    |              |                               | 0,000  |         |                      |
| 240  | 1315.334.039    |                   | GEAR SHIFT FORK   | 1        |    |              |                               | 0,000  |         |                      |
| 260  | ---             |                   | ARTICULATION BOLT | 1        |    | Z00004075611 | O.SCHEIBE M24X1,5<br>SK6      | 0,000  |         |                      |
| ---  | 1315.334.074    | 1877888           | ARTICULATION BOLT | 1        |    | Z00004075610 |                               | 0,000  |         |                      |
| 270  | ---             |                   | ARTICULATION BOLT | 1        |    | Z00004075611 | O.SCHEIBE M24X1,5<br>SK6      | 0,000  |         |                      |
| ---  | 1315.334.074    | 1877888           | ARTICULATION BOLT | 1        |    | Z00004075610 |                               | 0,000  |         |                      |
| 300  | 0731.201.563    |                   | CYLINDRICAL PIN   | 3        |    |              |                               | 0,000  |         |                      |
| 320  | 1316.301.042    | 133-158-1320      | GASKET            | 1        |    |              |                               | 0,000  |         |                      |
| 340  | 1315.301.118    |                   | INTERMPLATE       | 1        |    |              | ENTHALT.IN 1315 301<br>144(0) | 0,000  |         |                      |

# Parts list

Page 2 from 2

Material number: 1316.055.126

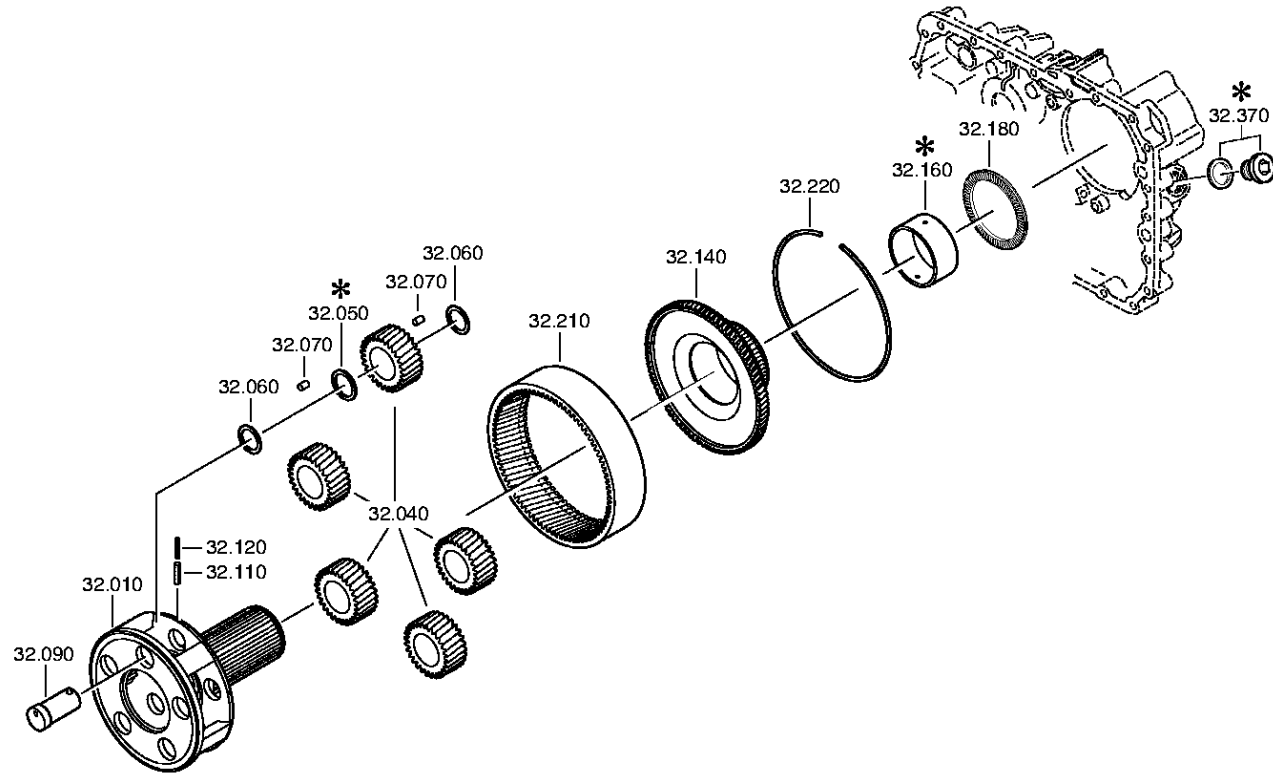
16 S 181 /

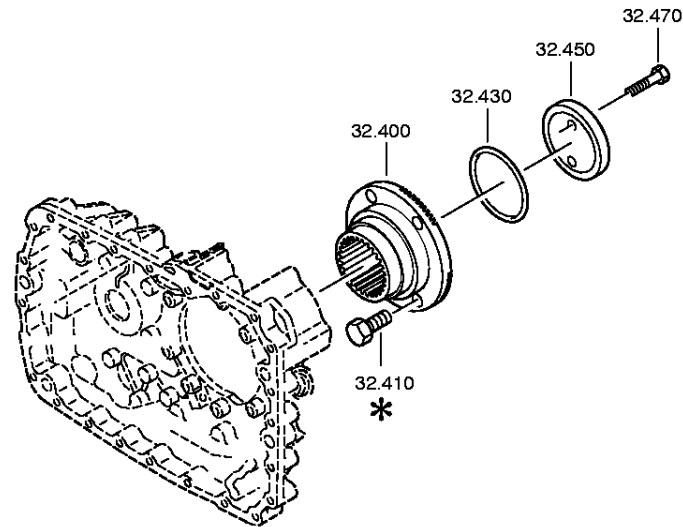
Plant: 068.43.21-1

Material-assembly-group-no: 1315.131.047



| Pos. | Material number | Customer material | Name         | Quantity | ME | Amend. no.   | Techn. Info.               | Weight | Rep kit | Alternative material |
|------|-----------------|-------------------|--------------|----------|----|--------------|----------------------------|--------|---------|----------------------|
| 360  | 1316.301.042    | 133-158-1320      | GASKET       | 1        |    |              |                            | 0,000  |         |                      |
| 420  | ---             |                   | SCREW PLUG   | 1        |    | Z00010111513 | 35N.M*DICHTRING<br>M18X1,5 | 0,000  |         |                      |
| ---  | 0636.100.791    |                   | SCREW PLUG   | 1        |    | Z00010111521 | M18X1,5                    | 0,000  |         |                      |
| ---  | 0634.801.062    |                   | SEALING RING | 1        |    | Z00010111521 | 18X24                      | 0,001  |         |                      |
| 470  | ---             |                   | SCREW PLUG   | 1        |    | Z00010111513 | 35N.M*DICHTRING<br>M18X1,5 | 0,000  |         |                      |
| ---  | 0636.100.791    |                   | SCREW PLUG   | 1        |    | Z00010111521 | M18X1,5                    | 0,000  |         |                      |
| ---  | 0634.801.062    |                   | SEALING RING | 1        |    | Z00010111521 | 18X24                      | 0,001  |         |                      |
| 500  | 0736.300.123    | 1880233           | HEXAGON BOLT | 11       |    |              | M10X70 M10X70              | 0,000  |         |                      |
| 510  | 0736.300.123    | 1880233           | HEXAGON BOLT | 1        |    |              | M10X70 M10X70              | 0,000  |         |                      |
| 520  | 0736.300.123    | 1880233           | HEXAGON BOLT | 1        |    |              | M10X70 M10X70              | 0,000  |         |                      |
| 530  | 0736.300.123    | 1880233           | HEXAGON BOLT | 1        |    |              | M10X70 M10X70              | 0,000  |         |                      |
| 540  | 0736.300.122    |                   | HEXAGON BOLT | 2        |    | Z00009403110 | M10X110 M10X110            | 0,000  |         |                      |
| 550  | 0736.300.134    |                   | HEXAGON BOLT | 1        |    | Z00011103210 | M10X45 M10X45              | 0,000  |         |                      |
| 560  | 0736.300.123    | 1880233           | HEXAGON BOLT | 2        |    |              | M10X70 M10X70              | 0,000  |         |                      |
| 570  | 0736.300.123    | 1880233           | HEXAGON BOLT | 1        |    |              | M10X70 M10X70              | 0,000  |         |                      |
| 580  | 0736.300.123    | 1880233           | HEXAGON BOLT | 1        |    |              | M10X70 M10X70              | 0,000  |         |                      |
| 590  | 0736.300.134    |                   | HEXAGON BOLT | 1        |    | Z00011103210 | M10X45 M10X45              | 0,000  |         |                      |
| 600  | 0736.300.123    | 1880233           | HEXAGON BOLT | 1        |    |              | M10X70 M10X70              | 0,000  |         |                      |
| 610  | 0736.300.123    | 1880233           | HEXAGON BOLT | 1        |    |              | M10X70 M10X70              | 0,000  |         |                      |





# Parts list

Page 1 from 1

Material number: 1316.055.126

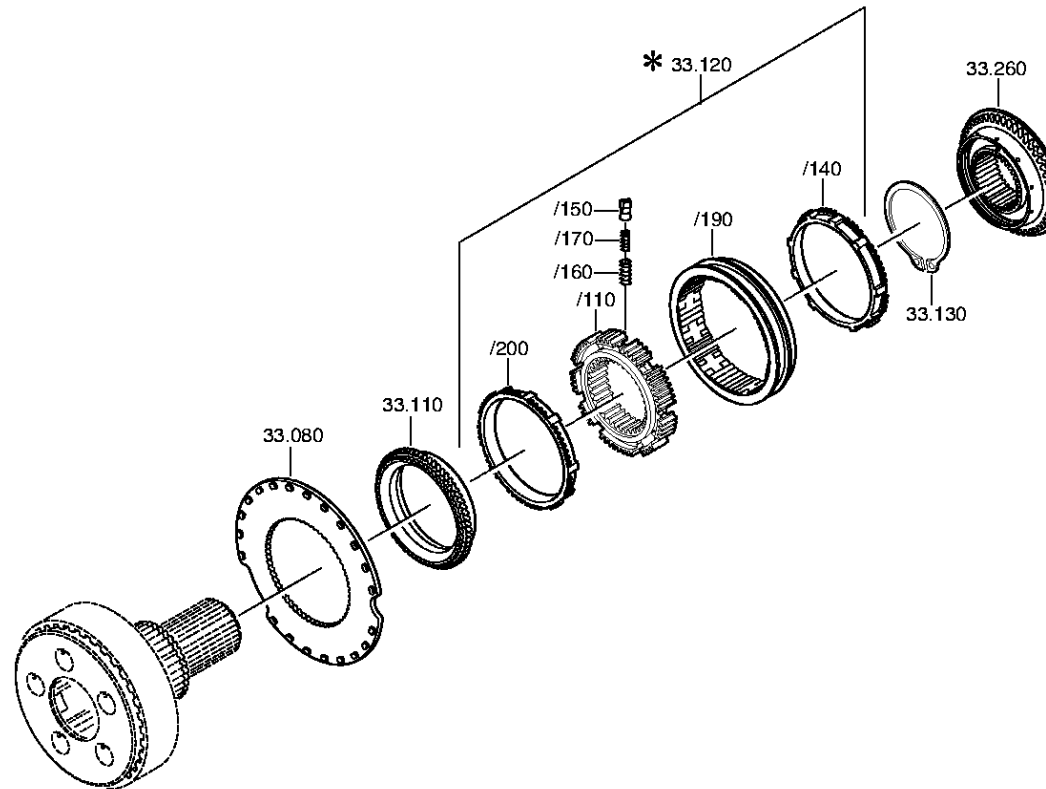
16 S 181 /

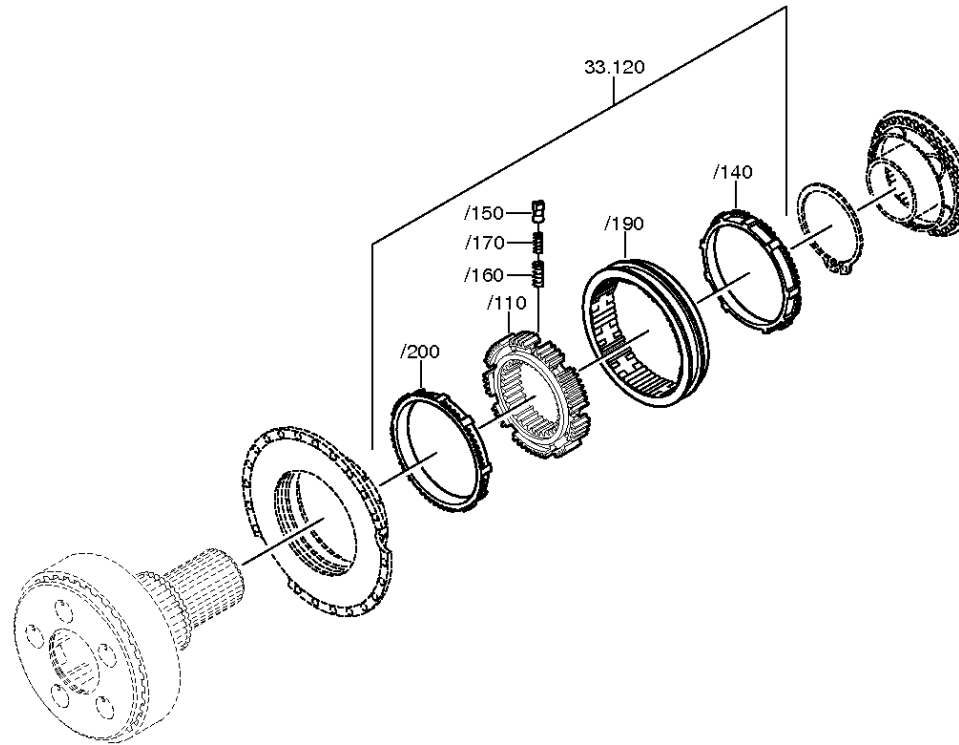
Plant: 068.44.07-1

Material-assembly-group-no: 1315.132.015



| Pos. | Material number | Customer material | Name                 | Quantity | ME | Amend. no.   | Techn. Info.                  | Weight | Rep kit | Alternative material |
|------|-----------------|-------------------|----------------------|----------|----|--------------|-------------------------------|--------|---------|----------------------|
| 10   | 1315.232.027    |                   | PLANET CARRIER       | 1        |    | Z00014438011 |                               | 0,000  |         |                      |
| 40   | 1315.232.010    | 5 5353 0          | PLANET GEAR SET      | 1        |    |              | KPL.                          | 0,000  |         |                      |
| 60   | 0730.107.168    |                   | INTERMWASHER         | 15       |    |              | A=1,00 IN 0730 105<br>951(2)  | 0,000  |         |                      |
| 70   | 0750.119.116    | 820-400-3060      | ROLLER               | 140      |    |              | 10,0X16,8                     | 0,010  |         |                      |
| 90   | 1315.332.091    |                   | PLANET SHAFT         | 5        |    | Z00014438011 |                               | 0,000  |         |                      |
| 110  | 0631.329.147    |                   | SLOTPIN              | 5        |    | Z00014438011 | 6X26                          | 0,000  |         |                      |
| 120  | 0631.329.261    |                   | SLOTPIN              | 5        |    | Z00014438011 | 3,5X26                        | 0,000  |         |                      |
| 140  | 1316.332.130    |                   | RING GEAR CARRIER    | 1        |    | C01007305F10 |                               | 0,000  |         |                      |
| 160  | 1316.333.014    |                   | INTERMRING           | 1        |    |              |                               | 0,000  |         |                      |
| 180  | 0735.298.169    | 820-400-3080      | AXIAL NEEDLE BEARING | 1        |    |              | 104,5X128,4X10,0<br>FA.INA    | 0,000  |         |                      |
| 210  | 1315.332.041    | 5 5867 0          | RING GEAR            | 1        |    |              | IN 1316 332 055(1)            | 0,000  |         |                      |
| 220  | 0730.513.583    |                   | LOCKING WIRE         | 1        |    |              | A=3,20 IN 0730 505<br>052(2)  | 0,000  |         |                      |
| 400  | 1297.333.110    | 03                | OUTPUT FLANGE        | 1        |    |              | ENTHALT.IN 1314 332<br>007(0) | 0,000  |         |                      |
| 430  | 0634.313.805    |                   | O-RING               | 1        |    | C01007959910 | 82X4                          | 0,000  |         |                      |
| 450  | 1312.332.028    |                   | WASHER               | 1        |    |              |                               | 0,000  |         |                      |
| 470  | 0636.011.777    |                   | HEXAGON BOLT         | 2        |    | Z00007292012 | M12X60                        | 0,000  |         |                      |





# Parts list

Page 1 from 1

Material number: 1316.055.126

16 S 181 /

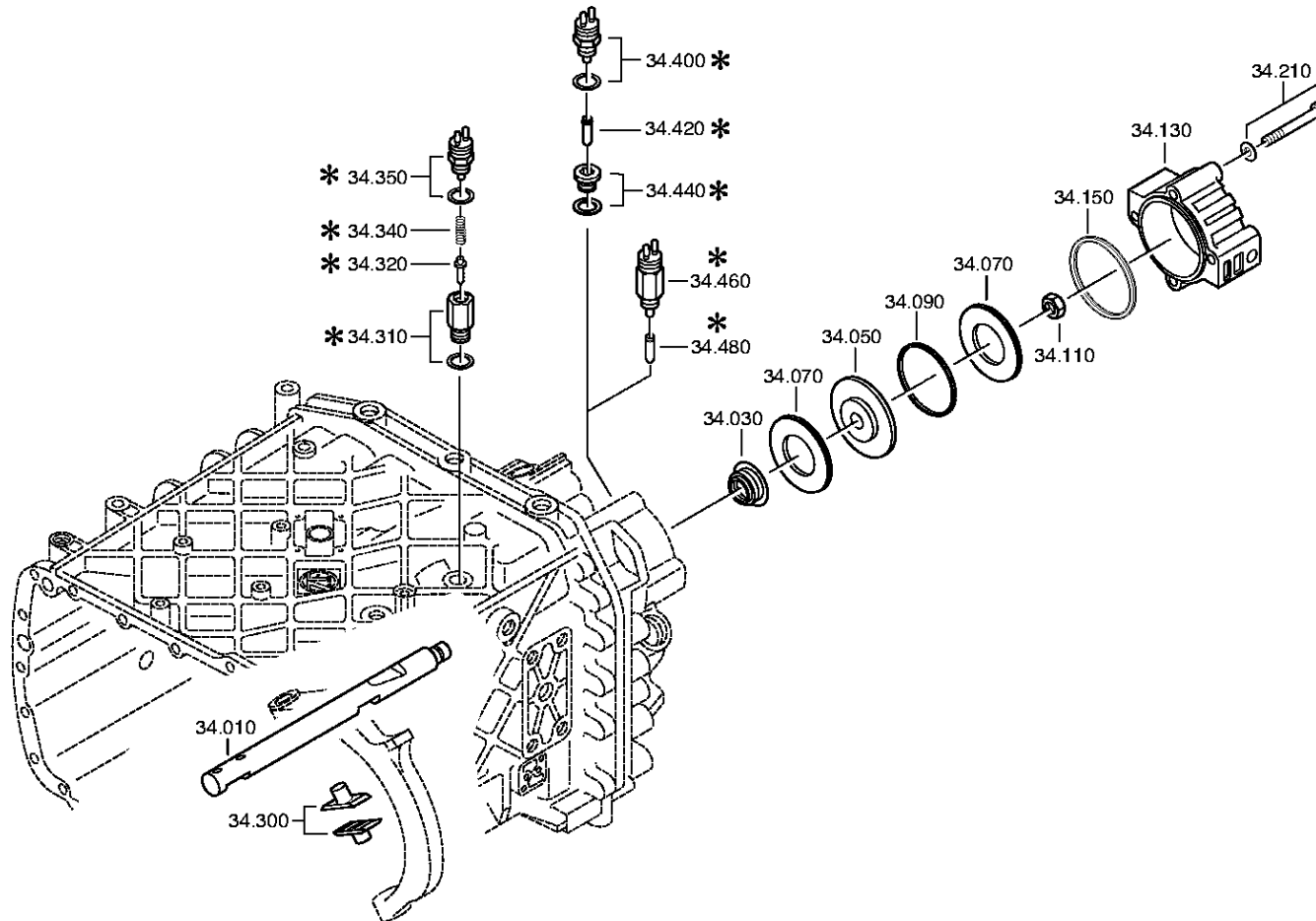
Plant: 068.45.04-1

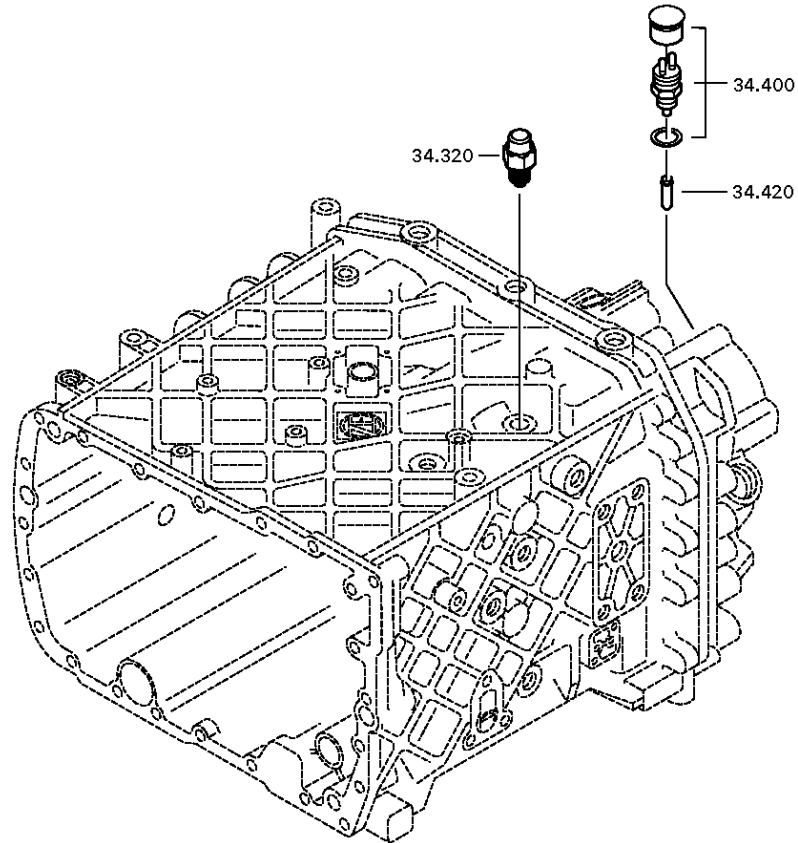
Material-assembly-group-no: 1316.133.008



| Pos. | Material number | Customer material | Name           | Quantity | ME | Amend. no.   | Techn. Info.               | Weight | Rep kit | Alternative material |
|------|-----------------|-------------------|----------------|----------|----|--------------|----------------------------|--------|---------|----------------------|
| 80   | 1296.333.046    |                   | CLUTCH DISC    | 1        |    |              | ENTHALT.IN 1296 333 051(1) | 0,000  |         |                      |
| 110  | 1296.333.050    | 5 5302 0          | CLUTCH BODY    | 1        |    | C01002627A10 | ENTHALT.IN 1296.333.053(1) | 0,000  |         |                      |
| 120  | 1316.233.022    |                   | SYNCHRONIZER   | 1        |    |              | KPL.PROFIL 80GV-GP 90SV-GP | 0,000  |         |                      |
| /110 | 1313.333.001    |                   | SYNCHROBODY    | 1        |    |              | ENTHALT.IN 1296 333 014(1) | 0,000  |         |                      |
| /140 | 1296.333.045    | 5 5301 0          | SYNCHRORING    | 1        |    |              |                            | 0,000  |         |                      |
| /150 | 1240.304.278    | 1334510410        | PRESSURE PIECE | 9        |    |              |                            | 0,000  |         |                      |
| /160 | 0732.040.385    | 0971040080        | COMPRSPRING    | 9        |    |              |                            | 0,000  |         |                      |
| /170 | 0732.040.386    | 097102000         | COMPRSPRING    | 9        |    |              |                            | 0,000  |         |                      |
| /190 | 1316.333.034    |                   | SLIDING SLEEVE | 1        |    | C01007317F10 | ZF-B 165/74 GP             | 0,000  |         |                      |
| /200 | 1296.333.045    | 5 5301 0          | SYNCHRORING    | 1        |    |              |                            | 0,000  |         |                      |
| 130  | 0630.501.175    | 0692274           | RETAINING RING | 1        |    | Z00006943010 | 125X3,7                    | 0,000  |         |                      |
| 260  | 1316.233.029    |                   | CLUTCH BODY    | 1        |    | C01007305F10 | KPL. ZF-B 165/74           | 0,000  |         |                      |







# Parts list

Page 1 from 1

Material number: 1316.055.126

16 S 181 /

Plant: 068.46.02-1

Material-assembly-group-no: 1316.134.021



| Pos. | Material number | Customer material | Name                 | Quantity | ME | Amend. no.   | Techn. Info.  | Weight | Rep kit | Alternative material |
|------|-----------------|-------------------|----------------------|----------|----|--------------|---|--------|---------|----------------------|
| 10   | 1316.334.016    |                   | GEAR SHIFT RAIL      | 1        |    |              |   | 0,000  |         |                      |
| 30   | 0750.112.253    | 5 8342 0          | FLANGE PACKING       | 1        |    |              | 25X40X15  | 0,000  |         |                      |
| 50   | ---             |                   | PISTON               | 1        |    |              | GP  | 0,000  |         |                      |
| ---  | 1315.334.034    |                   | PISTON               | 1        |    |              | ENTHALT.IN 1315 334 040(2)                            | 0,000  |         |                      |
| ---  | 1315.334.063    |                   | PISTON               | 1        |    |              |   | 0,000  |         |                      |
| 70   | 0734.307.294    | 5 8400 0          | SEALING RING         | 2        |    |              | 49X91X7,4 FA.KACO                                     | 0,000  |         |                      |
| 90   | 0750.112.066    | 5 5131 0          | GUIDE RING           | 1        |    |              |   | 0,000  |         |                      |
| 110  | 0737.300.037    |                   | LOCKING NUT          | 1        |    | Z00008929010 | MS16X1,5  | 0,000  |         |                      |
| 130  | 1315.334.069    | 5 5836 0          | CYLINDER             | 1        |    |              |   | 0,000  |         |                      |
| 150  | 0501.317.536    | 5 6096 0          | PROFILE SEALING RING | 1        |    |              |   | 0,000  |         |                      |
| 210  | ---             |                   | HEXAGON BOLT         | 4        |    | Z00007349210 | M10X90  | 0,000  |         |                      |
| ---  | 0636.015.688    |                   | HEXAGON BOLT         | 4        |    | Z00007349212 | M10X90  | 0,000  |         |                      |
| ---  | 0630.100.294    |                   | WASHER               | 4        |    | Z00007158111 |   | 0,000  |         |                      |
| 300  | 1296.334.004    | 0692175           | SLIDING PAD          | 2        |    |              |   | 0,000  |         |                      |
| 320  | ---             |                   | DETENT PLUNGER       | 1        |    |              | 145N*50N.M  | 0,000  |         |                      |
| ---  | 1324.207.035    |                   | DETENT PLUNGER       | 1        |    |              | KPL. *145 N   | 0,000  |         |                      |
| ---  | 0730.008.604    |                   | SEALING RING         | 1        |    |              |   | 0,000  |         |                      |
| 400  | ---             |                   | SWITCH               | 1        |    | Z00004287211 | SCHL*45N.M*<br>DICHTRING*<br>BAJONETT*<br>SCHUTZKAPPE | 0,000  |         |                      |
| ---  | 0501.210.058    | 1864900531        | SWITCH               | 1        |    |              | KPL.  | 0,000  |         |                      |
| ---  | 0634.801.062    |                   | SEALING RING         | 1        |    |              | 18X24   | 0,001  |         |                      |
| ---  | 0700.300.427    |                   | PROTECTING CAP       | 1        |    |              |   | 0,005  |         |                      |
| 420  | 1295.212.006    |                   | PIN                  | 1        |    |              | KPL.  | 0,000  |         |                      |

# Plant

Page 1 from 1

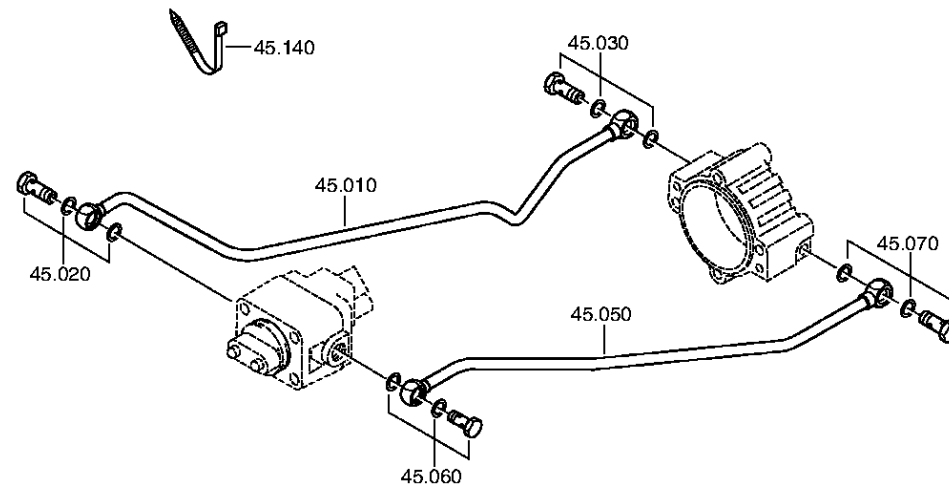
Material number: 1316.055.126

Plant: 068.57.04-1

Material-assembly-group-no: 1316.145.002

16 S 181 /

RANGE SELECTION



# Parts list

Page 1 from 1

Material number: 1316.055.126

16 S 181 /

Plant: 068.57.04-1

Material-assembly-group-no: 1316.145.002



| Pos. | Material number | Customer material | Name         | Quantity | ME | Amend. no.   | Techn. Info.                 | Weight | Rep kit | Alternative material |
|------|-----------------|-------------------|--------------|----------|----|--------------|------------------------------|--------|---------|----------------------|
| 10   | 1316.245.012    |                   | PIPE         | 1        |    | C01003831B10 | KPL.GP RE*L=589MM*<br>12X1,5 | 0,000  |         |                      |
| 20   | ---             |                   | UNION SCREW  | 1        |    | Z00010274511 | M14X1,5                      | 0,000  |         |                      |
| ---  | 0737.300.061    |                   | UNION SCREW  | 1        |    | Z00012473710 | M14X1,5                      | 0,000  |         |                      |
| ---  | 0634.801.217    |                   | SEALING RING | 1        |    | Z00010274513 | 14X20                        | 0,000  |         |                      |
| 30   | ---             |                   | UNION SCREW  | 1        |    | Z00010274511 | M14X1,5                      | 0,000  |         |                      |
| ---  | 0737.300.061    |                   | UNION SCREW  | 1        |    | Z00012473710 | M14X1,5                      | 0,000  |         |                      |
| ---  | 0634.801.217    |                   | SEALING RING | 1        |    | Z00010274513 | 14X20                        | 0,000  |         |                      |
| 50   | 1316.245.013    |                   | PIPE         | 1        |    | C01003831B10 | KPL.GP LI*L=605MM*<br>12X1,5 | 0,000  |         |                      |
| 60   | ---             |                   | UNION SCREW  | 1        |    | Z00010274511 | M14X1,5                      | 0,000  |         |                      |
| ---  | 0737.300.061    |                   | UNION SCREW  | 1        |    | Z00012473710 | M14X1,5                      | 0,000  |         |                      |
| ---  | 0634.801.217    |                   | SEALING RING | 1        |    | Z00010274513 | 14X20                        | 0,000  |         |                      |
| 70   | ---             |                   | UNION SCREW  | 1        |    | Z00010274511 | M14X1,5                      | 0,000  |         |                      |
| ---  | 0737.300.061    |                   | UNION SCREW  | 1        |    | Z00012473710 | M14X1,5                      | 0,000  |         |                      |
| ---  | 0634.801.217    |                   | SEALING RING | 1        |    | Z00010274513 | 14X20                        | 0,000  |         |                      |
| 140  | 0659.160.081    |                   | CABLE CLIP   | 1        |    | C01006654E10 | 4,7X210                      | 0,000  |         |                      |