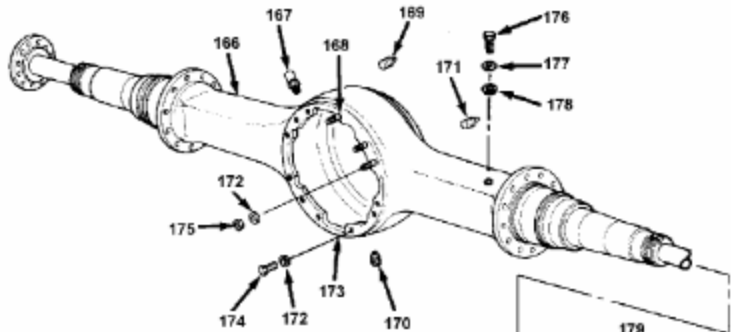
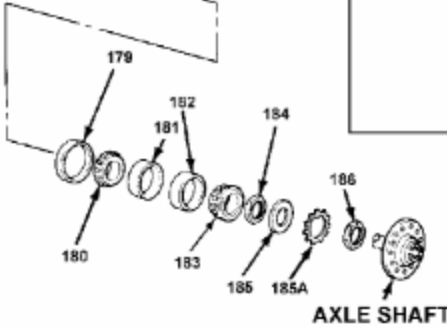


HOUSING ASSEMBLY PARTS

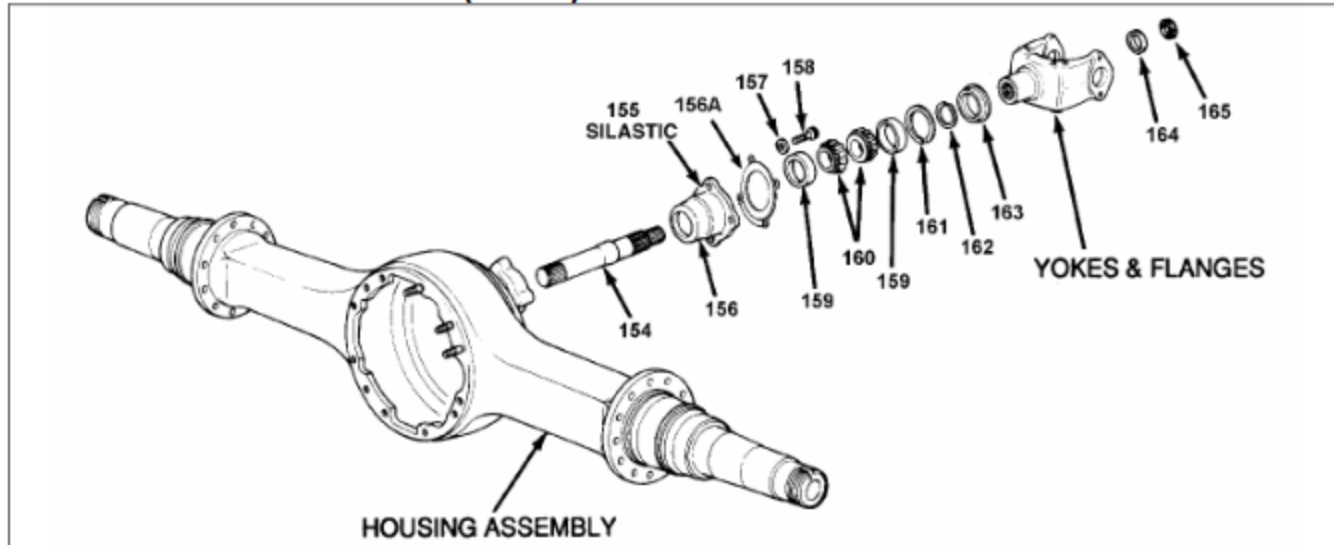


WHEEL END	
L SERIES	R SERIES
RD-17-145	MD-20-143
RP-17-145	MP-20-143
RR-17-145	MR-20-143
RS-16-140	RD-17-144
RS-17-140	RD-19-144
RS-18-141	RD-20-140
RS-17-141	RD-20-145
RS-17-145	RD-22-145
RS-19-145	RP-17-144
	RP-19-144
	RP-20-145
	RP-22-145
	RR-17-144
	RR-19-144
	RR-20-140
	RR-20-145
	RR-22-145
	RS-17-144
	RS-19-144
	RS-21-145

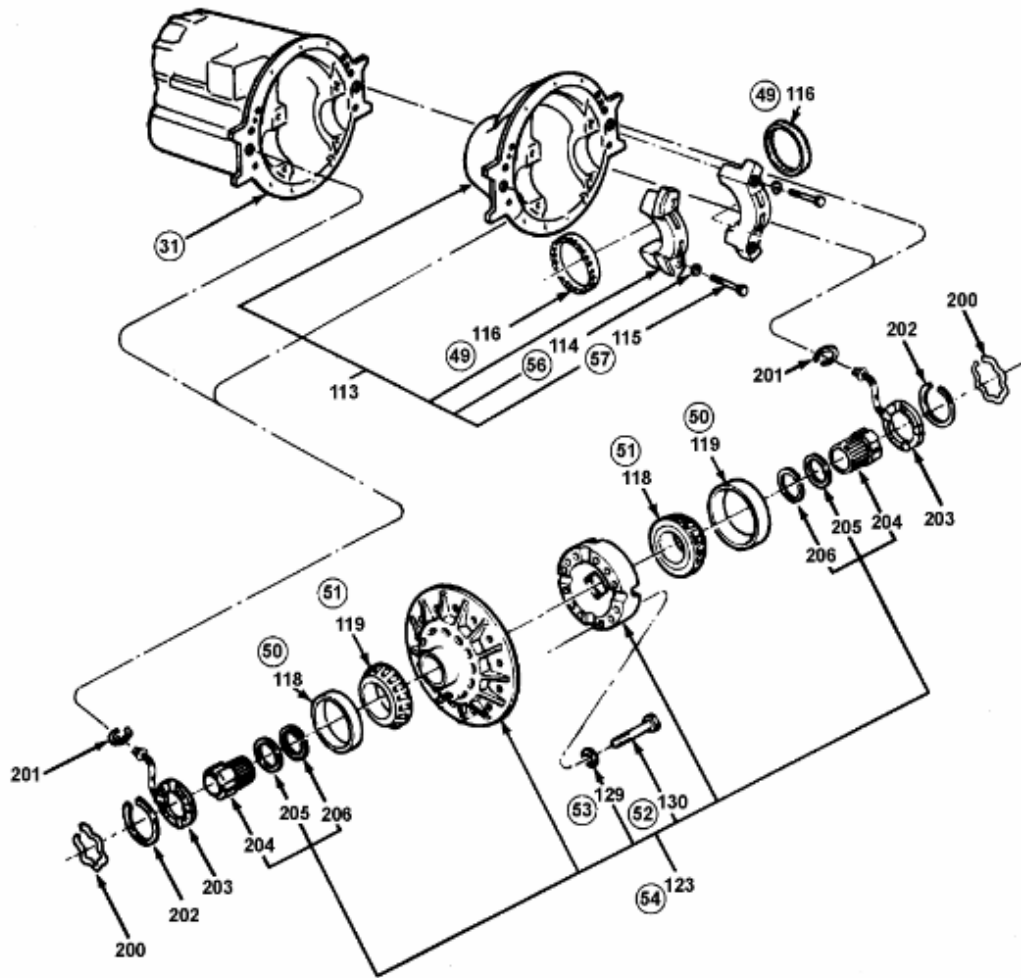


AXLE SHAFT

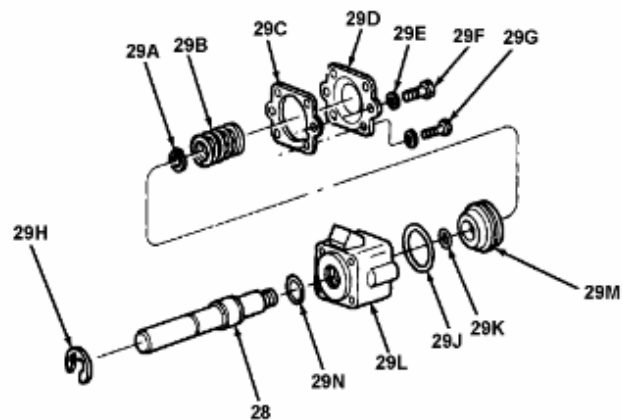
OUTPUT (THRU) SHAFT ASSEMBLY PARTS



**SUPPLEMENTAL DRAWING
CARRIERS WITH INTERNAL A.B.S.**



EXPLODED VIEW OF REVERSE AIR SHIFT UNIT




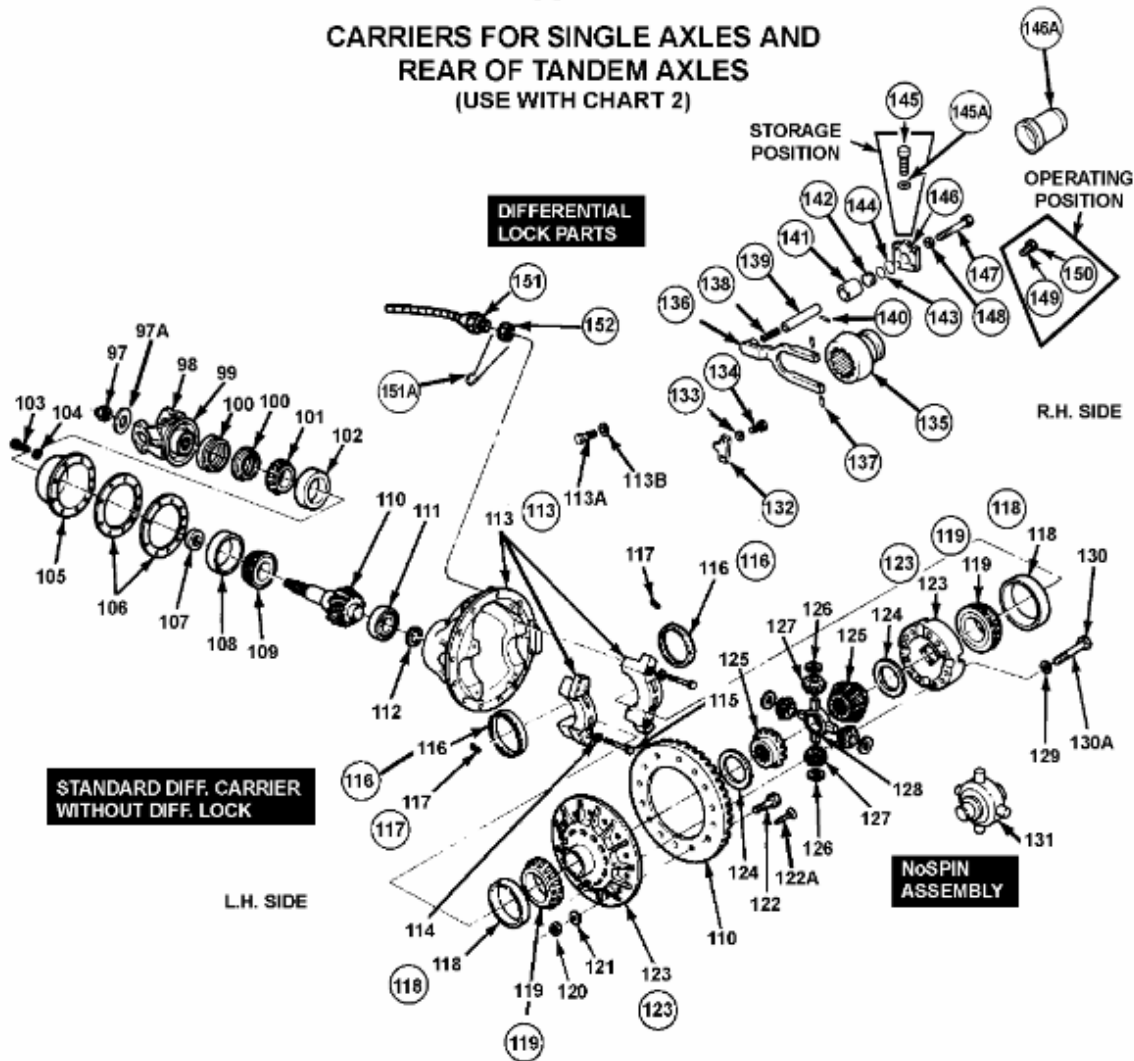
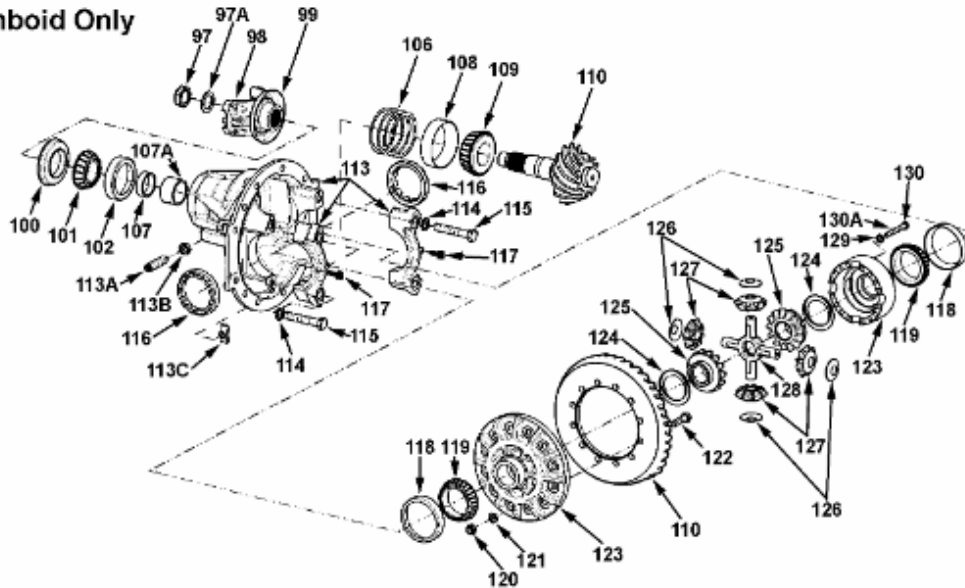
• Circled  numbers are diff. lock parts or parts that change when diff. lock is added.

FIGURE 2
CARRIERS FOR SINGLE AXLES AND
REAR OF TANDEM AXLES
 (USE WITH CHART 2)

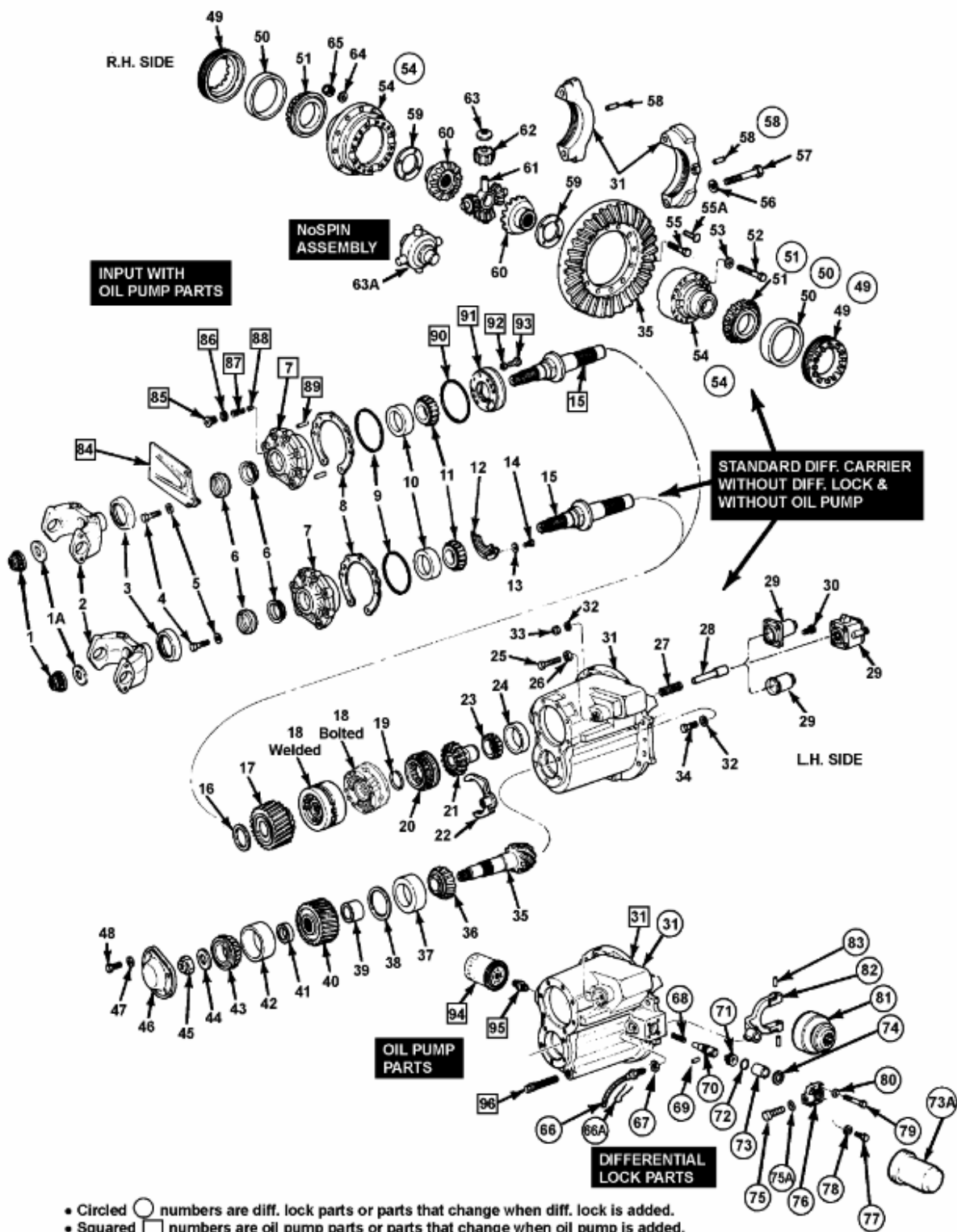


Amboid Only



• Circled numbers are diff. lock parts or parts that change when diff. lock is added

FIGURE 1
FORWARD CARRIERS OF TANDEM AXLES
 (USE WITH CHART 1)



- Circled numbers are diff. lock parts or parts that change when diff. lock is added.
- Squared numbers are oil pump parts or parts that change when oil pump is added.